

Moving Up!

Strategies for Preparing YOUR Next ATE Project Proposal

March 11, 2021

This material is based upon work supported by the National Science Foundation Grant No. 1840856 and No. 2032835. Any opinions findings and conclusions or recommendations expressed in this material are those of the author(s) and do not necessarily reflect the views of the National Science Foundation.



1

Thank you



SUPPORTING ADVANCED TECHNOLOGICAL EDUCATION

www.atecentral.net

2

2

Introductions



Elaine Craft
Principal Investigator, Mentor-Connect
Florence-Darlington Technical College, SC
President, Elaine L. Craft Educational
Consulting, L.L.C.



Elizabeth (Liz) Teles, Former
ATE Program Director, co-PI on
two ATE Mentor-UP awards



Pamela Silvers
NSF ATE PI,
Computer Technologies Instructor,
Skilled Workers Get Jobs

3

3

Why Move UP?

- Leverage what you learned with a first proposal
- Expand your horizon
- Achieve a larger vision initiated with first grant



4

4

When Should You Move Up?



- Have results
- Have partners, or more partners
- See a need
- Desire to sustain momentum initiated with first grant award
- Identify an appropriate funding opportunity



5

5

Read the Solicitation



(NSF 18-571)

Alert! New Solicitation Coming in 2021.



Advanced Technological Education (ATE)

PROGRAM SOLICITATION
NSF 18-571

REPLACES DOCUMENT(S):
NSF 17-568



National Science Foundation

Directorate for Education & Human Resources
Division of Undergraduate Education
Research on Learning in Formal and Informal Settings

Full Proposal Deadline(s) (due by 5 p.m. submitter's local time):

October 15, 2018

October 03, 2019

October 01, 2020

Usually, the first
Thursday in October

6

6

ATE Projects: Focus Areas



Funding up to \$600K over 3 years

- Program Development and Improvement (coupled with Professional Development)
- Curriculum and Educational Materials Development
- Professional Development for Educators



7

Unique Funding Options



ATE Project Opportunities

- Instrumentation with Curriculum Revisions (\$400-500K, 2-3 yr.)
- Adapt and Implement (\$300-400K, 2-3 yr.)
- New to ATE (\$300K, 2-3 yr.)



8

Other ATE Project Options



- Teacher Preparation
- Business and Entrepreneurial Skills Development for Students
- Leadership Capacity Building for Faculty
- Coordination Networks



9

9

Solicitation Focus Suggestions



- Program Development/Improvement ranging from credit courses to industry internships for students
- Professional Development and Leadership Capacity Building for faculty
- High School Teacher Prep and student on-ramps to technician education
- Business and Entrepreneurial Skills Development for students



10

10

Excluded from ATE Solicitation



- Scholarships
- General STEM education without technician focus
- Specific equipment (next slide)
- Predominantly transfer program
- Health, Veterinary or Medical technician program



11

11

Equipment Excluded



- Replacement equipment or instrumentation that does not significantly improve instructional capability
- Teaching aids
- Vehicles, trailers, laboratory furnishings, or general utility items
- Maintenance equipment and related contracts
- Modification, construction, or furnishing of laboratories or other buildings
- Installation of equipment or instrumentation

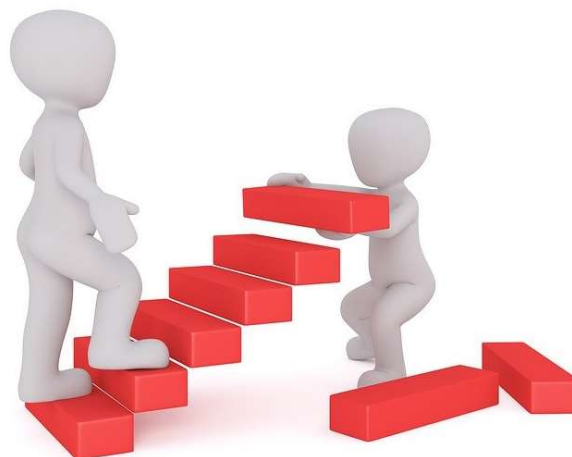
12

12

Important FIRST Steps



- Make a case - rationale for your idea
- Consider your results of prior support - they matter



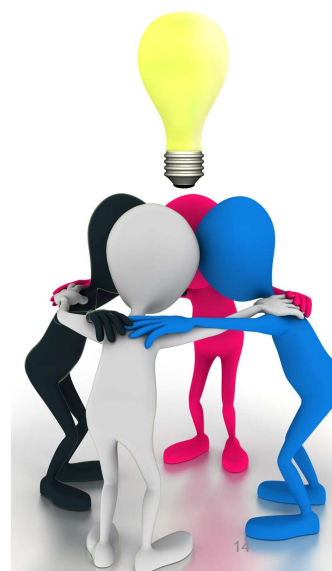
13

13

Get Input Early



- Ask advice from PIs with multiple awards
- Participate in a mentoring program
- Share one page summary with Program Officer



14

14

Mentoring



- Mentoring projects - provided to help you
- Types of mentoring/coaching
 - Program development (subject matters experts)
 - Proposal development (help with solicitation requirements)
 - Evaluation
 - Industry Involvement
- ATE Central - connect to resources

15

15

Teams



- Build cohesive teams
 - Proposal team - faculty focus
 - Project team - broader college representation
- Budget funds to support faculty. May include overload pay if aligned with college policy.



16

16

Institutional Support



- Focus on institution and partner values and capabilities
- Get internal approval
- Align to college mission and values
- Work with administrators - so they see the value
- Tie to strategic goal of the college and local economic development- make the case



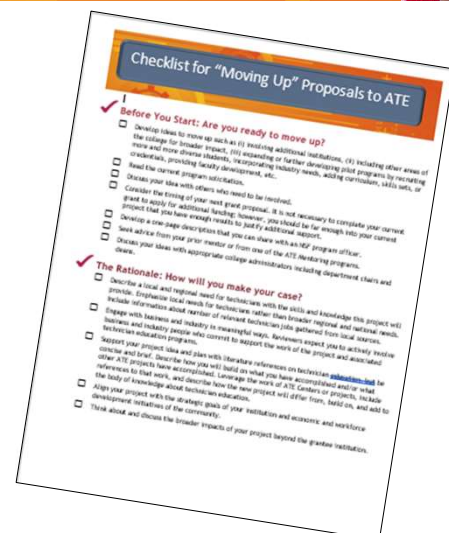
17

17

Checklist



- Pay attention to the Checklist for “Moving-Up” Proposals to ATE (download file from Chat)
 - Things that must be included
 - Reasons that proposals get returned without review



18

18

Checklist Topics

- Before you start
- The rationale
- Results of prior support
- Partners
- The work plan
- The management plan
- Budget and other resources
- Evaluation
- Dissemination
- Items to avoid
- Check before you submit

19

Moving Up Success

- If you are going to be the PI - have a passion for what you are doing
- Ensure it is something both you and your college want
- Make sure Co-PIs are on board
- Make sure business and industry are on board



20

20

PAPPG



- Reference/Remember the PAPPG
 - Pay attention to latest version of the Proposal and Award Policies and Procedures Guide (PAPPG)
 - NSF #20-1 www.NSF.gov (search 20-1 or PAPPG)
- Follow the instructions for supplementary documents

21

21

Use ATE Resources



- Technical assistance webinars and tutorials
 - Budget and budget justification
 - Forms
 - Evaluation
- Workshops, seminars and other professional development opportunities
- FAQs
- Help desks



... AND MORE

22

22

Advanced Technological Education Grant Mentoring for Two-Year Colleges

Mentor Up





The purpose of the project is to increase the number and quality of proposals submitted annually. This will be achieved through 2.5 day intensive workshop accompanied by one-on-one mentoring with experienced Principal Investigators and past NSF Program Officers.

- 2.5 day proposal writing workshop
- Pre-workshop questions
- Mentoring by experienced Principal Investigators and past NSF Program

23

23

Mentor Up



Goals

- Broaden knowledge, build capacity, and increase access
- Increase the number of competitive proposals

Activities

- Faculty team, supported by a grant writer or administrator, is assigned a mentor
- Preworkshop, workshop, and postworkshop support is provided
- Continued support is available during negotiations and/or resubmission

24

24

Focus of Mentor Up



- Project proposals are encouraged from all community colleges including but not limited to institutions new to ATE
- Registration open January 15, 2021 through April 1, 2021
- Workshop Date: June 14 - 16, 2021
- Stipends: \$500 for each of two faculty members following workshop and \$250 each upon submission of proposal
- Applications must
 - Include a one-page project description, a support letter from an administrator, and names of faculty members
 - Be submitted to atementorup.org

25

25

Mentoring for ATE Proposal Success



26

26

Mentor-Connect



Since 2012, Mentor-Connect has been helping two-year colleges compete for NSF ATE grant funding

- 165 community colleges
- 74% success rate for participants
- 22 trained Mentors



27

27

What Mentor-Connect Does



- Teaches ATE grant proposal preparation strategies
- Guides proposal writing
- Advises prospective grantees through the funding process
- Provides technical support for project start-up
- Answers questions about project implementation
- Stimulates STEM faculty leadership development
- Prepares Mentors to work with prospective grantees

28

Connect with Mentor-Connect



843-676-8541

Help Desk



www.Mentor-Connect.org



Elaine Craft, PI



**Emery DeWitt, Co-PI
Project Manager**

29

29

Contact Us

- Elaine Craft - Elaine.Craft@fdtc.edu
- Elizabeth Teles - ejteles@yahoo.com
- Pamela Silvers - pamelajsilvers@abtech.edu

30

30

ATE Central Office Hours



- Tuesday, March 16 - 3:00 - 4:00 (ET)
- Presenters will be available to answer questions
- You will receive information and link to join

Please complete the survey



31