



IN PARTNERSHIP WITH





AACC/AASA Joint Convening on College Readiness Oct. 21-22, 2018

***United for Student Success: EPCC-UTEP-SISD
Regional Partnership in El Paso, Texas***





Meet Your Presenters

**Carmen Crosse, Assistant Superintendent Secondary Education
Socorro Independent School District (SISD)**

**Ivette Savina, Assistant Vice President for Outreach and Student Access
Director, El Paso Collaborative for Academic Excellence
The University of Texas at El Paso (UTEP)**

**Margie Nelson Rodriguez, Special Projects Assistant to the Vice President of
Instruction and Workforce Education and Associate English Professor
El Paso Community College (EPCC)**





Presentation Overview

- **Regional Economic and Educational Attainment Background**
- **Partnership Background**
- **Key Partnership Programs: ECHS and Dual Credit, El Paso Collaborative for Academic Excellence**
- **Pathways Work: Accomplishments and Next Steps**





The Best Place to Start *and Finish!*

El Paso County 2017

□ Population

✓ El Paso County 837,918

□ Hispanic

✓ El Paso County – 82.2%

UNEMPLOYMENT RATE: 4.9% (2016)

□ Persons below poverty level 2011-2015:

✓ El Paso County – 23%

✓ Texas = 17.3%

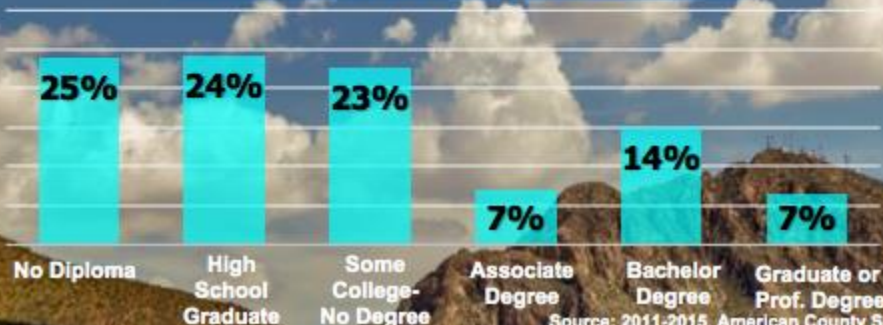
□ Median Household Income 2011-2015:

✓ El Paso County - \$41,637

✓ State of Texas - \$53,207

✓ United States - \$53,889

Educational Attainment: Persons 25 Years & Older



Source: 2011-2015 American County Survey 5 year Estimate, U.S. Census Bureau – 09/15/17



Proudly Serving our Community for 49 Years

- ✓ Established in 1969; opened its doors in 1971
- ✓ Offers traditional credit transfer, workforce programs, ESL and continuing education curriculum
- ✓ Awards AA, AS, and AAS Degrees and one-year certificates

Nursing Students Then and Now



| FALL 2017 | |
|----------------------------|-----------------|
| Enrollment | 28,849 |
| Female | 57% |
| Male | 43% |
| Economically Disadvantaged | 49% |
| Hispanic | 85% |
| Majority of Students | Under Age of 30 |
| Average Age | 22 |



UTEP by the Numbers



Enrollment

| Level | Fall 2018 | Percent of Total |
|---------------------------------|-----------|------------------|
| Undergraduate | 21,464 | 85% |
| Post Baccalaureate (non degree) | 45 | <1% |
| Master's | 2,721 | 11% |
| Doctoral | 921 | 4% |
| Total | 25,151 | 100% |

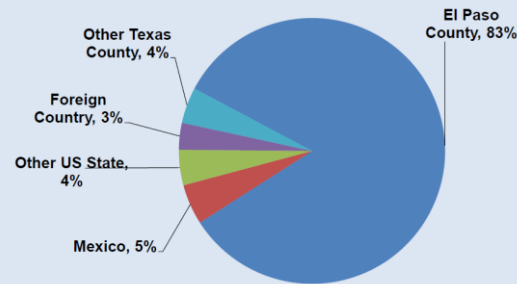
20 years of consecutive growth in total enrollment, from 14,677 in Fall 1998 to 25,151 in Fall 2018

Ethnicity

| Ethnicity | Percent |
|-----------------------|---------|
| Hispanic | 80.2% |
| White Non-Hispanic | 7.2% |
| Mexican International | 3.9% |

UTEP Student Origins

Fall 2018



- 50% of New UG students are first-generation in college
- 54% of all students are female
- 61% of all students are enrolled full-time

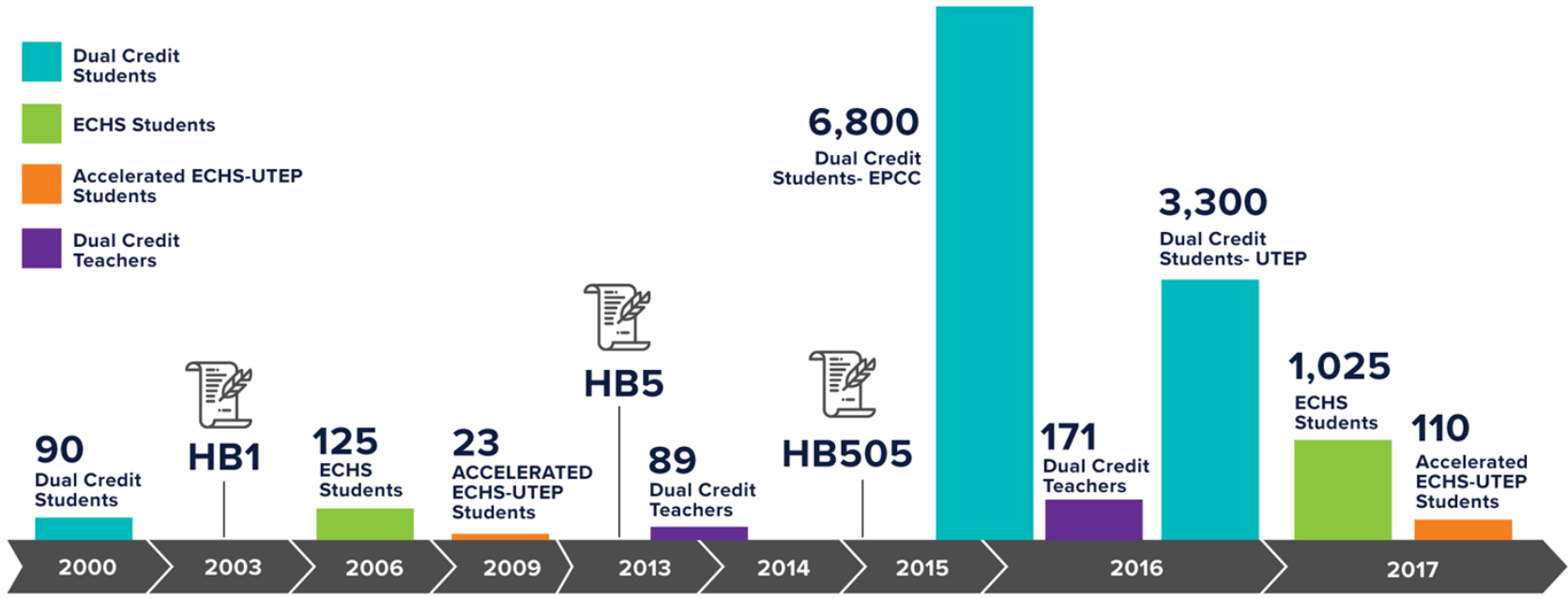


Background of EPCC-UTEP-SISD Partnership

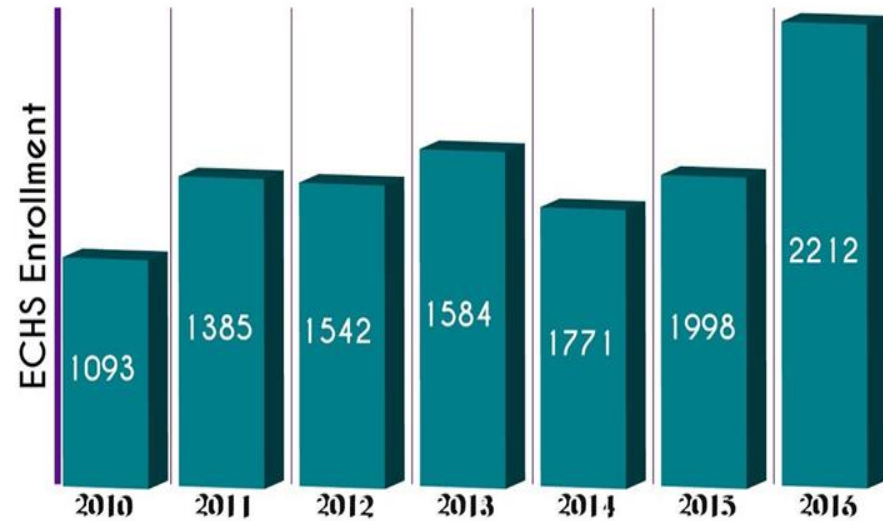
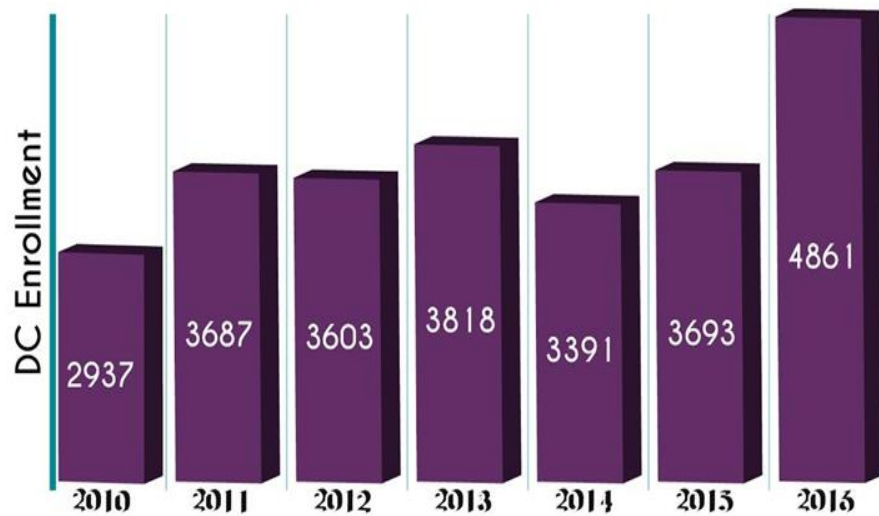
- Unique geography; culture of collaboration
- Visionary leaders willing to take risks to improve education outcomes
- Sustainable, strategic growth



Growth of Dual Credit in the El Paso Region



EPCC ECHS & Dual Credit Student Enrollment



Source: THECB Data Share



El Paso Community College



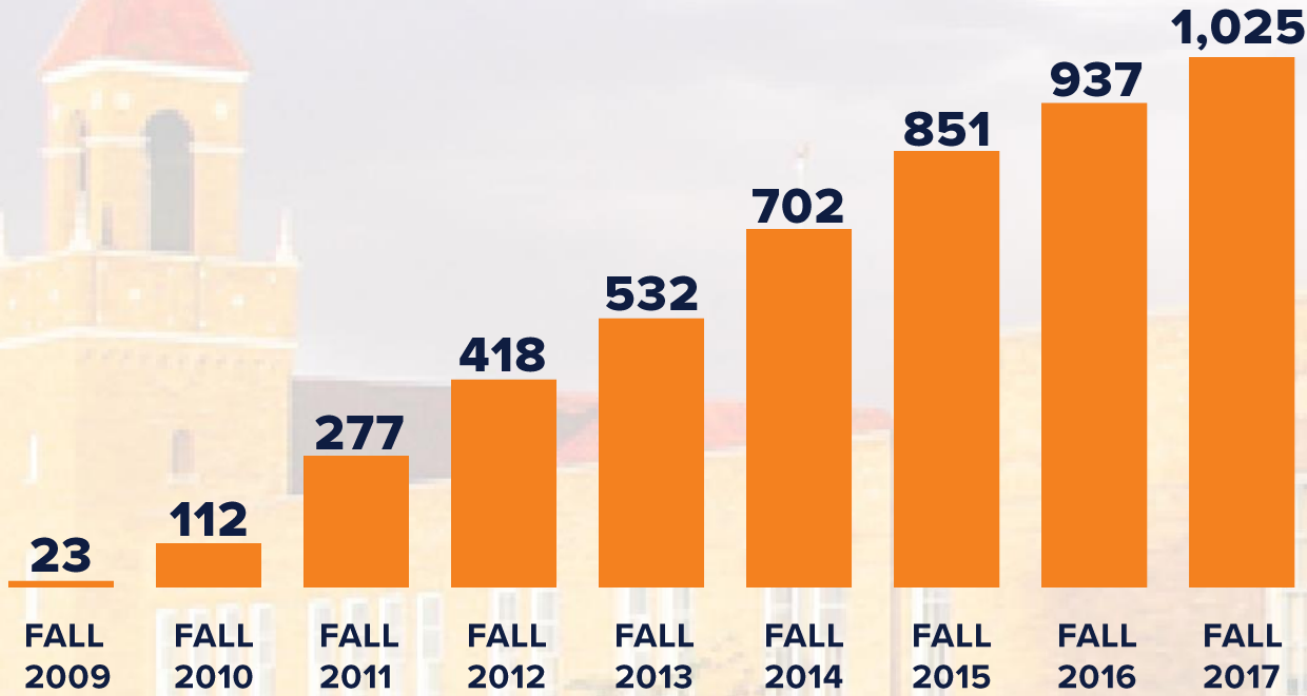
**Dr. Serrata, President
El Paso Community College**

“In El Paso, 74% of our Early College High School students complete an Associate’s Degree compared to the national average of 30%.”





ECHS to UTEP Enrollment



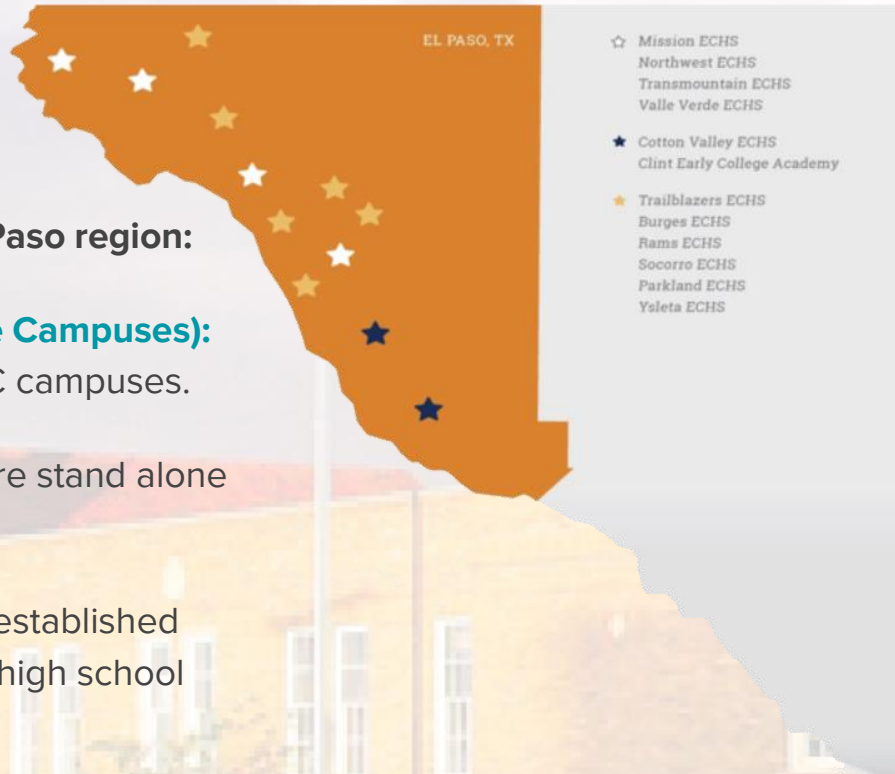
There are 3 ECHS models in the El Paso region:

On-site (El Paso Community College Campuses):

The first ECHS's are located on EPCC campuses.

Stand Alone: The next two ECHS's are stand alone buildings not on EPCC campuses.

School within a school: The newest established ECHS's are located within traditional high school campuses.





Impact



THE UNIVERSITY OF TEXAS AT EL PASO

DUAL CREDIT= STUDENT SUCCESS



Non-Dual
Credit

2.3 X
more likely

4 YEAR GRADUATION

Dual credit students are **2.3 times more likely to graduate from college in four years or less** than non-dual credit students



Dual
Credit

6 YEAR GRADUATION

Dual credit students are **more likely to graduate in 6 years or less than non-dual credit students**



60%
more likely

PERSISTENCE

Dual credit students are **40% more likely to continue their studies** than non-dual credit students

40%
more likely

GPA



Dual credit students **earn a higher GPA 3.26 vs 3.08**

> 7,000
+ 150,000

IMPACT

Dual credit students enrolled from 2005-2015

Transferred credit hours from EPCC with an estimated savings of **\$36 Million** in tuition & fees

POST GRAD

More dual credit graduates pursue post secondary programs than non-dual credit graduates



62% vs 45%





Network of Support

Leadership

- El Paso Collaborative for Academic Excellence
- Dean of ECHS/DC
- ECHS Leadership Council
- Executive Articulation Council
- ECHS/DC Principal and Counselor Academy

Professional Support

- EPCC Dual Credit Conference
- EPCC Spring Forum
- Dual Credit Professional Organization- NEW!
- Onboarding modules- NEW!

University Support

- ECHS Scholarships
- ECHS Academic Success Center
- ECHS Counselor & Administrator Academy
- Dual Credit Initiative Committee





Two success stories

- Gabriela Franco

MECHS (SISD)/EPCC and UTEP graduate

EPCC Professor, Biology Department

- Abigail Muniz

VVECHS/EPCC and UTEP graduate

Served as CECA Math teacher



Relationships & Leadership

“If there is one takeaway of utmost significance from the El Paso experience, it is the close **relationship between ECHSs, EPCC, and UTEP that allows for implementation of seamless **pathways** from ninth grade to the bachelor’s degree and beyond to graduate and professional degrees.”**

USA. Addressing the 61st Hour Challenge: Collaborating in El Paso to Create Seamless Pathways from High School to College. By Nancy Hoffman and Valerie Lundy-Wagner. Boston: JFF & GTF, 2016. Print.

JFF- Jobs for the Future is a national nonprofit that works to ensure educational and economic opportunity for all. GTF- Greater Texas Foundation supports efforts to ensure all Texas students are prepared for, have access to, persist in, and complete postsecondary education.

Pathways & Partnerships

“The University of Texas at El Paso (UTEP) has been particularly successful in reaching the goal of graduating large numbers of ECHS students with minimal loss of college credit in the transfer to university.”

USA. Addressing the 61st Hour Challenge: Collaborating in El Paso to Create Seamless Pathways from High School to College. By Nancy Hoffman and Valerie Lundy-Wagner. Boston: JFF & GTF, 2016. Print.

JFF- Jobs for the Future is a national nonprofit that works to ensure educational and economic opportunity for all. GTF- Greater Texas Foundation supports efforts to ensure all Texas students are prepared for, have access to, persist in, and complete postsecondary education.

High School Endorsements to EPCC Meta Majors

Arts & Humanities,
Multidisciplinary

Business &
Industry

Business &
Industry

STEM

Public
Service

Public
Service

Public
Service

Public
Service

ARTS, HUMANITIES, COMMUNICATION DESIGN

AA-Arts
AA-Communication
AA-Advertising & Public Relations
AA-Journalism & Mass
Communication
AA-Radio & Television
AA-Broadcasting-
Cinematic Production
AA-Chicana/o Studies
AA-English
AA-Dance
AA-Philosophy
AA-Speech Communication
AA-Theater
AA-Advertising Graphics &
Design
AA-Fashion Technology-Fashion
Design Option
AA-Fashion Design- Illustration
Option
AA-Fashion Design-
Merchandising Option
AA-Multidisciplinary Studies
AA-Advertising Graphics &
Design
CC-Fashion Technology-
Industrial Patternmaking
-Music

BUSINESS

AA-ACCT, BUSI and ECON
AAS-Business Management-
Insurance Option
AAS- Business Management-
Office Administration Option
AAS-Business Management-Real
Estate Option
AAS-Business Management-Small
Business Management Option
AAS-Accounting
CC-Business Management-
Insurance
CC-Business Management-Office
Assistant
CC-Business Management-Real
Estate
CC-Business Management-Small
Business Management
CC-Computerized Accounting
Applications

INDUSTRY, MANUFACTURING & CONSTRUCTION

AAS-Automotive Technology
AAS-Culinary Arts CHIEF
AAS-Culinary Arts Pastry
AAS-Culinary Arts Restaurant Mgt
AAS-Hospitality Operations
AAS-Travel and Tourism
AAS-Interior Design
AAS-Computer Aided Design
AAS-Heating, Ventilation and Air
Conditioning
AAS-Industrial Manufacturing
AAS-Industrial Maintenance
AAS-Renewable Energy Technology
Systems
CC-Culinary Arts
CC-Front Desk Operations
CC-Travel Counselor/Airline
Reservationist
CC-Interior Design
CC-Cosmetology
CC-Diesel
CC-Electrical
CC-Machining
CC-Welding
CC-Diesel Mechanic Assistant
CC-Construction Specialization
CC-Mechanical Specialization
CC-Residential HVAC Tech
CC-HVAC
CC-Mechanic Technician
CC-Robotics and Automation
CC-Photovoltaic Installers
CC-Renewable Energy Technology
Systems
CC-Drivability Technicians
CC-One-year (Automotive)
CC-Two Year (Automotive)

STEM (SCIENCE, TECHNOLOGY, ENGINEERING & MATH)

AS Physics
AS-Electrical Engineering
AS-Civil Engineering
AS-Industrial Engineering
AS-Materials Engineering
AS-Mechanical Engineering
AS-Geological Sciences
AS-Multidisciplinary Studies in
Sciences
AS-Chemistry
AS-Biological Sciences
AA-Kinesiology (formerly an AS)
AS-Psychology
AS-Mathematics
AA-Computer Science
AAS-Computer Programming
AS-Architecture
CC-Entry level Computer
Programming
CC-Information Technology in
Business
CC-Data Support Specialist
CC-Computer Support Technician
CC-CISCO Networking Training
CC-Health Information Networking
CC-Networking and Security
Technologies

EDUCATION

AAT-Teaching
AAS-TEAC Child Development
AA-Teacher Preparation
CC-Infants and Toddlers
CC-Teacher Assistant

HEALTH SCIENCES

AAS-Dental Hygiene
AAS-Diagnostic Medical Sonography
AAS-Emergency Medical Services
Technology-Paramedic
AAS-Medical Assisting Technology
AAS-Medical Imaging Technology
Radiography
AAS-Dental Assisting
AAS-Medical Laboratory Technology
AAS-Nursing
AAS-LVN to RN Transition
AAS-Pharmacy Technology
AAS-Physical Therapist Assistant
AAS-Respiratory Care Technology
AAS-Surgical Technology
AAS-Nursing-Paramedic to RN
AAS-Health Information Management
(Medical Coding and Billing)
CC-Fundamentals of Vocational Nursing
CC-Diagnostic Medical Sonography
CC-Emergency Medical Technology
CC-Emergency Medical Services
C2-Advanced EMT
CC-Medical Coding and Billing
CC-Medical Transcription
CC-Medical Assisting Technology
CC-Dental Assisting
CC-Border Health Issues
CC-Fundamentals of Nursing
CC-Vocational Nursing
CC-Pharmacy Technology
CC-Emergency Medical Services

PUBLIC SERVICE

AA-Criminal Justice
AAS-Criminal Justice
AAS-Homeland Security
AAS-Court Reporting
AAS-Paralegal
AAS-Basic Firefighter
AAS-Fire Science
AAS-Fire Management
CC-Law Enforcement
CC-Homeland Security
CC-Legal Stenographer/Scopis/Counseling
CC-Paralegal
CC-Fire Inspector
CC-Fire Officer
CC-Basic Fire Fighter

SOCIAL & BEHAVIORAL SCIENCES

AA-Psychology
AAS-Sign Language/Interpreter
Preparation
AAS-Social Work
CC-American Sign Language
Deaf Studies
CC-Drug/Alcohol Abuse



El Paso
Community
College

High School Endorsements

EPCC Meta Majors



Smoothing the Pathway

HB5 Endorsements to EPCC and UTEP programs, especially for ECHS, Dual Credit, and Career and Technical Education (CTE)

Expanding breadth of EPCC program maps from 8th grade to UTEP degree completion

Incorporate Fields of Study into program maps to improve articulation

Develop a cohesive, consistent communication and engagement strategy with students, parents, and the community on this work





Accomplishments



- ✓ EPCC faculty developed all program maps by May 2017, revised AY 2017-2018, and rolled out to students fall 2018
- ✓ Faculty participated in mini-institutes on campus to help examine current offerings, select preferred courses, and engage with transfer partners
- ✓ Curriculum Committee developed 8 meta-majors and organized all programs under these broad areas
- ✓ DE webpages developed and added to the maps
- ✓ Program maps for Associate of Arts and Sciences Multi-disciplinary Studies (AAMS and ASMS) developed
- ✓ EPCC has been participating in Texas Pathways to increase capacity and assist with Texas-specific items for Guided Pathways, such as HB2223 and HB5



Creating Pathways



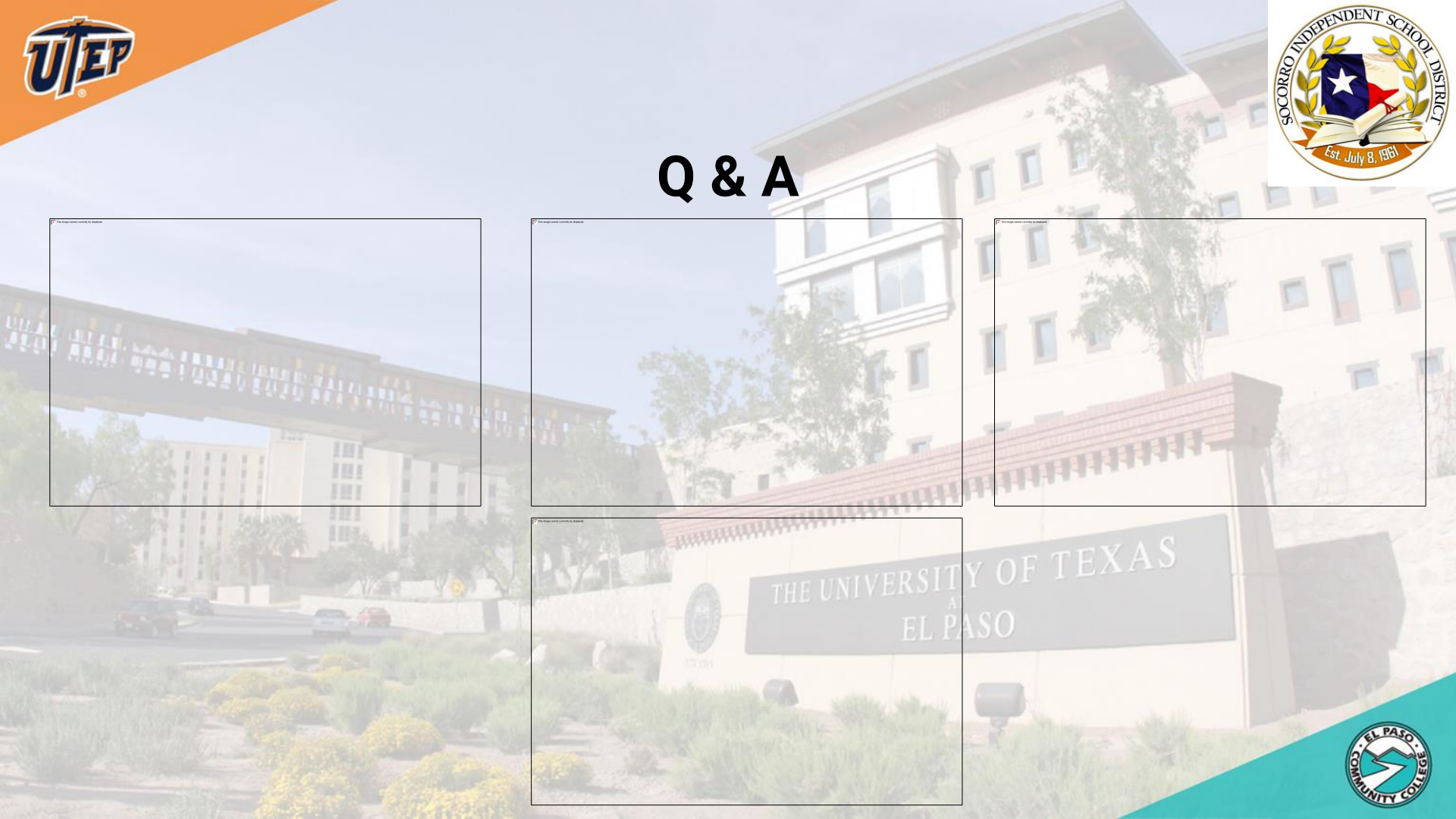
for Student Success

Next Steps

- **EPCC will be**

- ✓ Working on the new Texas educational bill, HB2223, co-requisite requirements and effects on pathways
- ✓ Based on developmental education pathways institute in June 2018, disciplines have an action plan to share with the wider college community
- ✓ Transforming the student success course, EDUC 1300, to a more intense career exploration course to include contextualization for specific meta-majors and expanded offerings for CTE students
- ✓ All these important topics are being explored in more detail with Texas Pathways and the Dual Credit Innovation Collaborative (DCIC): connecting HB5 endorsements to meta-majors and developing transfer maps that tie in high school, community college, and university partners

Q & A





Contact List

Carmen Crosse

ccross01@sisd.net

(915) 937-0300

Twitter: @SISD_SEC

Ivette Savina

isavina@utep.edu

(915) 747-7448

Twitter: @UTEPVP_Savina

Margie Nelson Rodriguez

mnelson9@epcc.edu

(915) 831-6475

