

Hawai'i Has a Multi Agency Need for Better Workforce Intel

I need a picture of the job situation!

Where's this economy going?

I need a job!



Hawai'i Has a Multi Agency Need for Better Workforce Intel

It's not just about a tool

It's not about having more meetings

It's about strategic intentionality





2014 *CHE* Student Motivation for Choosing a College: Job

STUDENTS

Questions regarding:

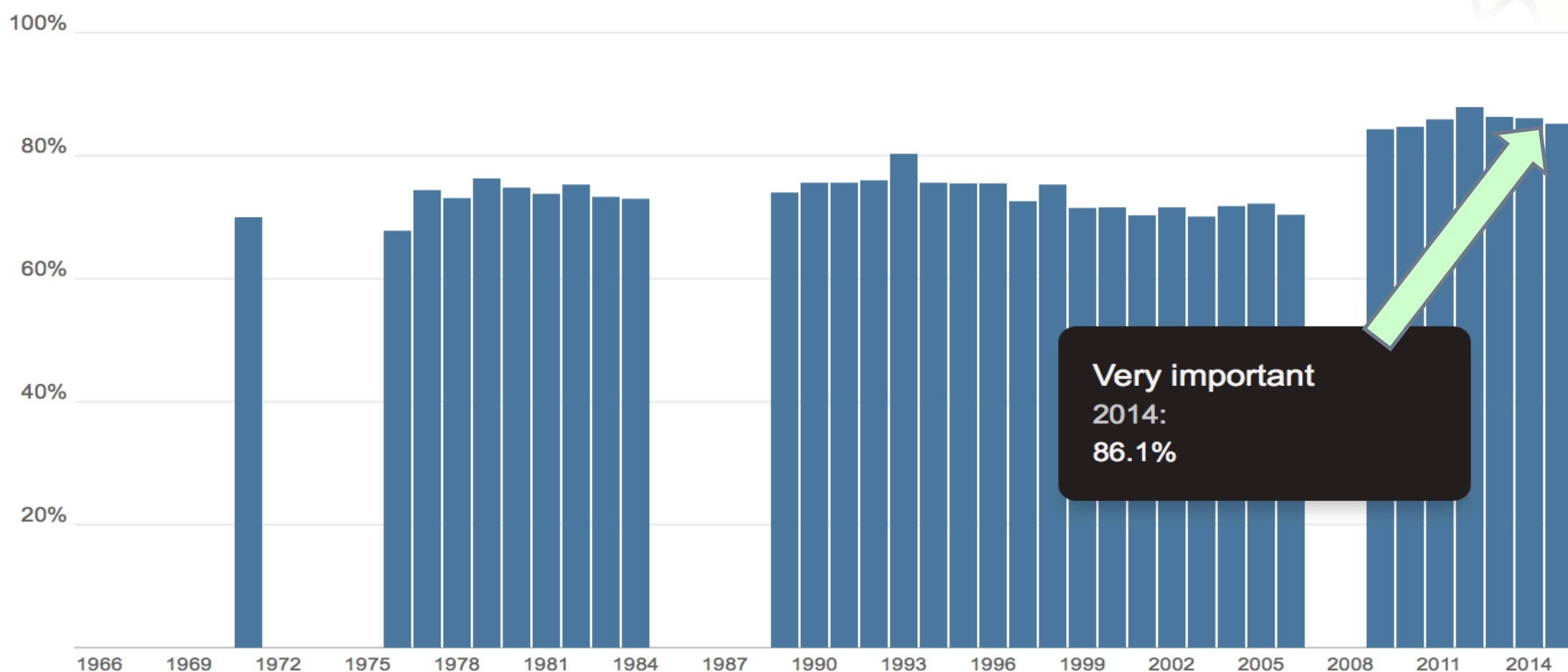
College choice and getting a job



[Previous](#) | [Next](#)

In deciding to go to college, how important a reason was ... to be able to get a better job?

■ VERY IMPORTANT



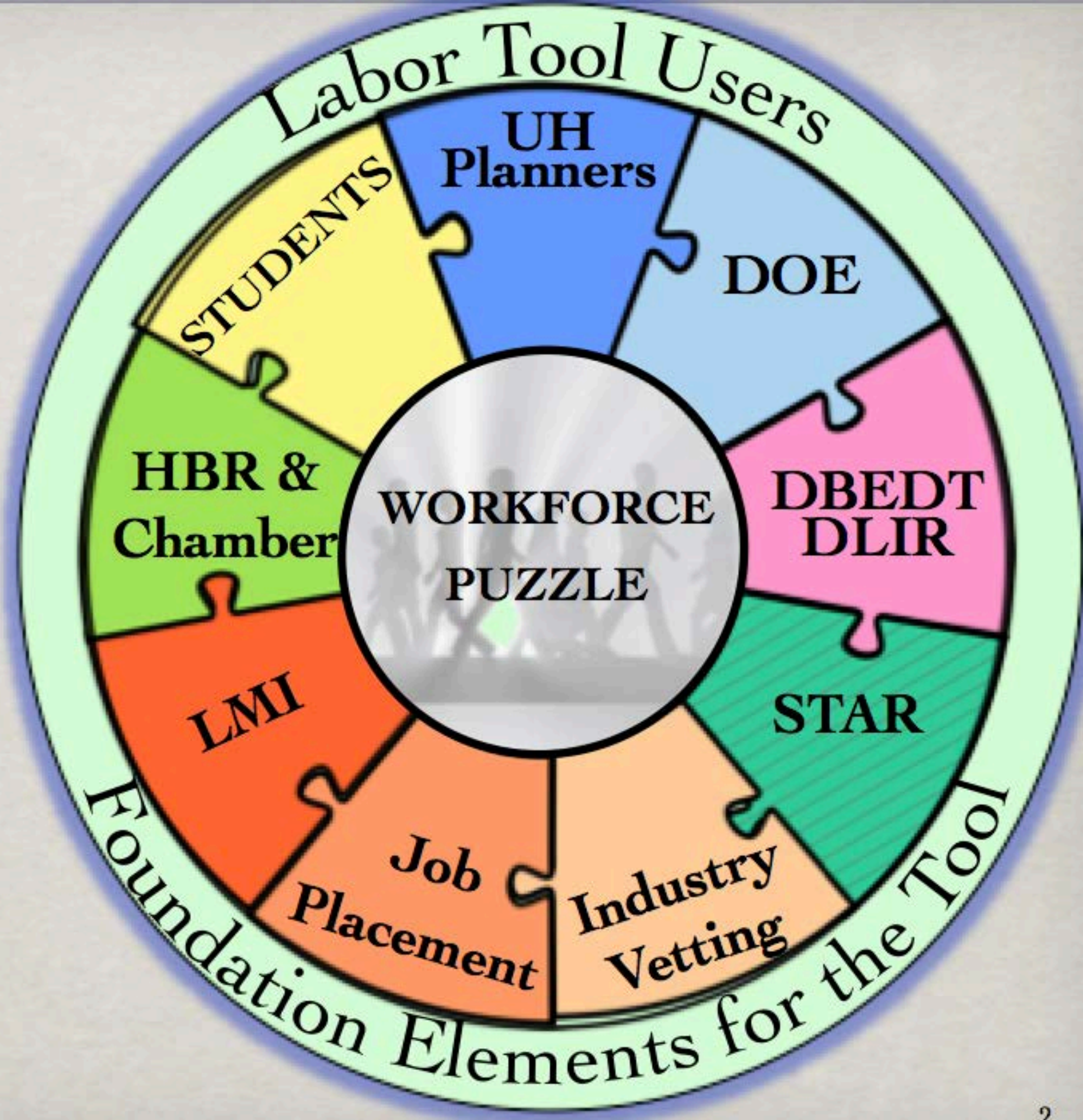
Source: Cooperative Institutional Research Program, Higher Education Research Institute, U. of California at Los Angeles

Just returned from UH's East/West Center Seminar on the entrepreneurial university

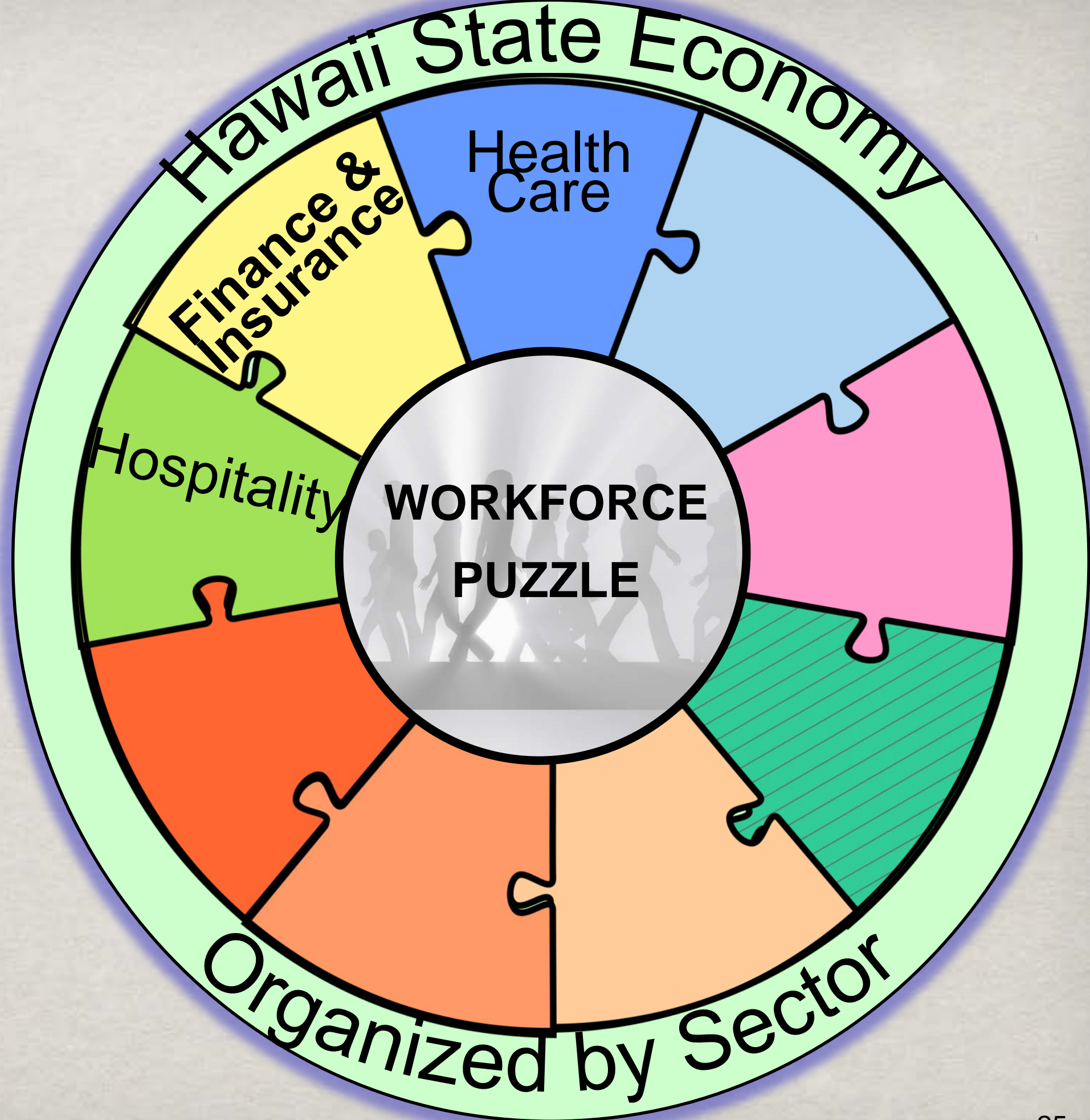
- Japan, China, Malaysia, India, Thailand, S. Korea, Hong Kong have all focused their universities on entrepreneurship, commercialization of research
- Making “job creators not job seekers” (Malaysia)
- The rest of the world is no longer debating education alignment with the economy



What would alignment between the economy, workforce and education look like?



**Convening
Process
Facilitated by
*Collaborative
Economics*;
we will
convene
three demand
sectors to vet
our maps and
to seek
guidance**





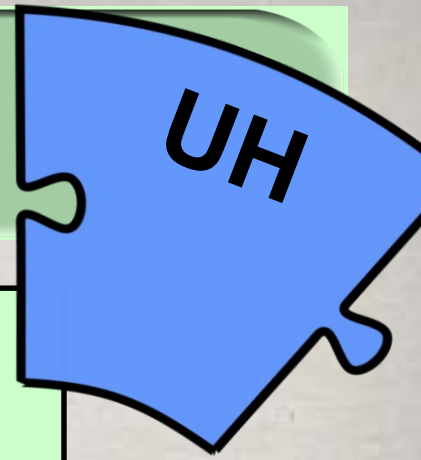
Industry Led Vetting by Sector



- This process lets us validate our LMI generated picture of an economic sector;
- It allows us to validate salaries, demand numbers, and skill sets;
- It allows us to validate the value of goods to a sector;
- It allows us to clarify exceptions: eg, liberal arts majors are hired as hotel managers;
- It turns business into a “transformational partner”;



Economic Alignment Needs for UH



UH needs a coherent and uniform way to understand and communicate:

- 1) Program relevance in the Hawai'i economy
- 2) Program demand levels: present and future projections;
- 3) Special demand areas: low numbers; high need
- 4) Graduation levels relative to demand: over or under producing;
- 5) Program opportunities: missed areas in the economy?;
- 6) Skill sets that are aligned or not with industry need;
- 7) Student demand that may or may not fit into Hawaii economic priorities;



Access Labor Map Through STAR: see Jobs and Landing Page



ACADEMIC ESSENTIALS

GRADUATION PATHWAY

CAREER OPPORTUNITIES

WHAT IF JOURNEY

Graduation Pathway BS ELECTRICAL ENGINEERING

AY 2015 - 2016

Fall 2015

| | | |
|-------------------|-----------|----|
| Written Comm (FW) | ENG | CR |
| NOT IN PLAN | OTHA | CR |
| NOT IN PLAN | OTHA ELEC | CR |
| NOT IN PLAN | OTHO ELEC | CR |

Academic Events

Add Academic Event

Credits: 12

Spring 2016

+ CR16

| | | |
|-----------------------|-----------|-----|
| NOT IN PLAN | ICS ELEC | *** |
| NOT ARTICULATED (HON) | MATH 9 | *** |
| NOT IN PLAN | OTHO ELEC | *** |
| NOT IN PLAN | OTHO ELEC | *** |

General Chemistry I (DP) ★ CHEM 161

General Chemistry I Lab ★ CHEM 161L

Global (FGA, FGB, or FGC)

Academic Events

Add Academic Event

- Job
- Job
- Job
- Job
- Job
- Job

Occupation Profile



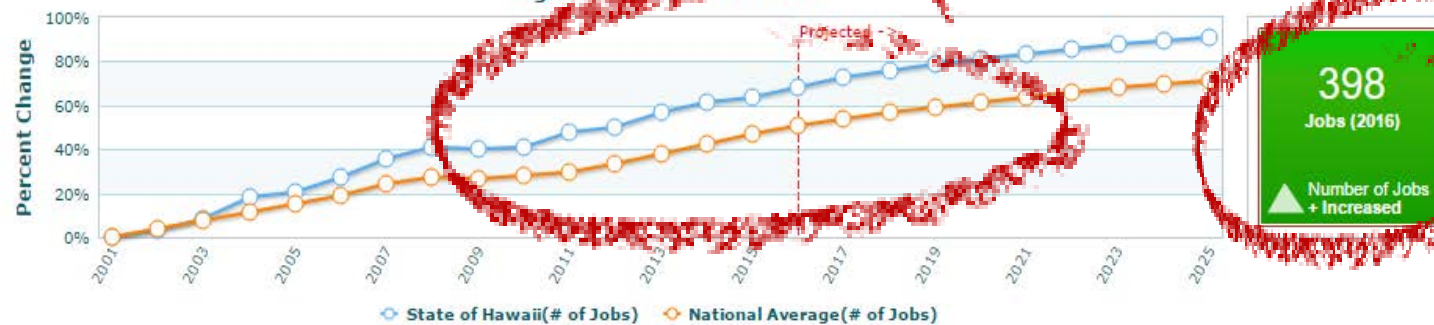
Veterinary Technologists and Technicians [State of Hawai'i]

29-2056 Standard Occupational Classification (SOC) [Details](#)

Perform medical tests in a laboratory or clinical setting. Assist in the treatment and diagnosis of diseases in animals. Prepare vaccines and serums for prevention of diseases. Prepare tissue samples, take blood samples, and execute laboratory tests, such as urinalysis and blood counts. Clean and sterilize instruments and materials and maintain equipment and machines. May assist a veterinarian during surgery.

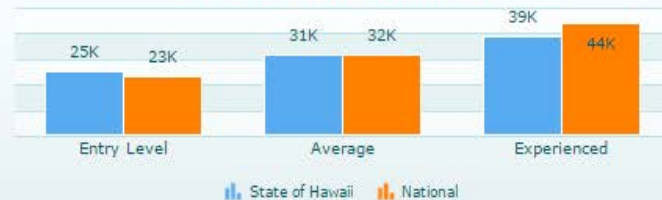
Bright Outlook

Regional Job Market Trends



How much will I get paid?

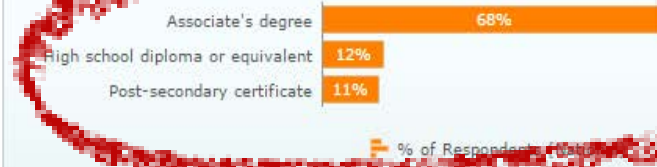
Earnings (Hawaii vs National)



\$31,579 (State of Hawaii Average Salary)
is **below** the National Average **\$32,522**

[Learn more about Wages](#)

Will I need a college degree?



[Learn more about Education Requirements & Training](#)

What are some common tasks associated with this job?

Care for and monitor the condition of animals recovering from surgery.

Maintain controlled drug inventory and related log books.

Administer anesthesia to animals, under the direction of a veterinarian, and monitor animals' responses to anesthetics so that dosage can be adjusted.

Restrain animals during exams or procedures.

Administer emergency first aid, such as performing emergency resuscitation or other life saving procedures.

Observe the behavior and condition of animals and monitor their clinical symptoms.

Perform laboratory tests on blood, urine, or feces, such as urinalyses or blood counts, to assist in the diagnosis and treatment of animal health problems.

[Learn more about Job Requirements](#)

Will I be able to find a job?

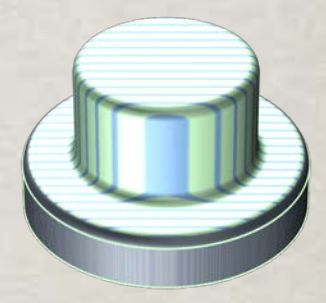
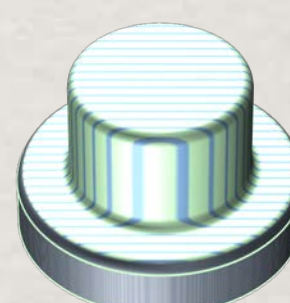
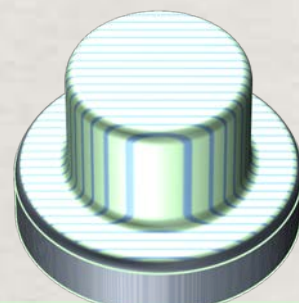
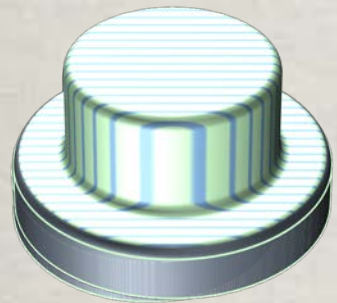


Vet Tech: Landing Page

- Current picture and future trends/outlook
- Number of current jobs in state
- Hiring which degree level
- Current live postings
- New and Replacement data



Assessment of Programs Relative to Economic Alignment



- Program
- Program
- Program
- Program
- Program
- Program
- Program
- Program
- Program

Programs and
Grads in High
Demand Zone

- Program
- Program
- Program
- Program
- Program
- Program
- Program
- Program
- Program

Opportunity: Areas
Where We Are
Absent

- Program
- Program
- Program
- Program
- Program
- Program
- Program
- Program
- Program

Low and Medium
Demand

- Program
- Program
- Program
- Program
- Program
- Program
- Program
- Program

Productivity, Skills
Assessment