

# WALLACE STATE

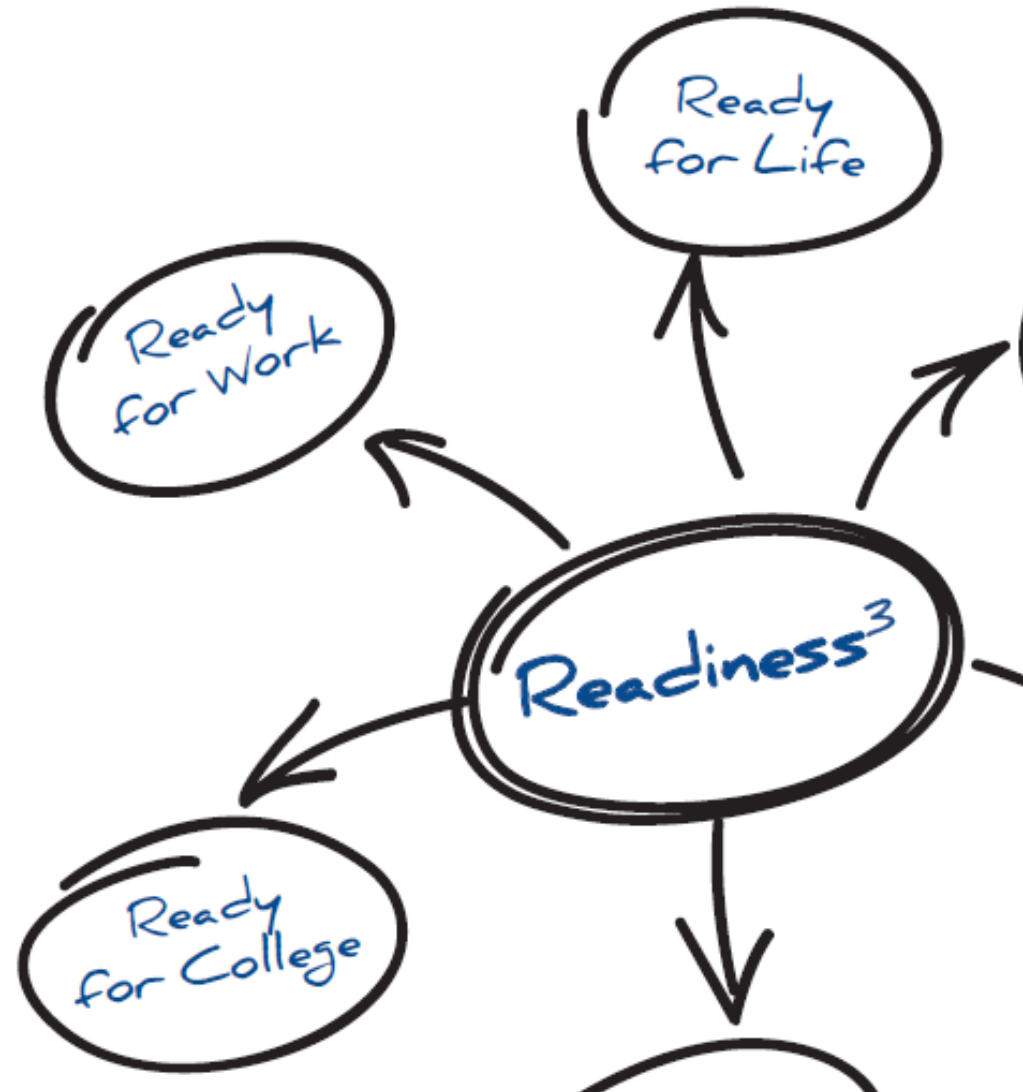
## A Decade of Partnership in Pathways to Employment





# WALLACE STATE HANCEVILLE

## 2012-2017 Strategic Plan





WALLACE STATE COMMUNITY COLLEGE

# ECONOMIC OVERVIEW & PROGRAM GAP ANALYSIS

---

emsi

PREPARED BY EMSI  
AUGUST 2015



**TABLE 2.2: SUPPLY AND DEMAND FOR WSCC ASSOCIATE'S LEVEL PROGRAMS**

CIP CODE	CIP TITLE	AVERAGE ANNUAL OPENINGS	AVERAGE ANNUAL COMPLETERS	AVERAGE ANNUAL WSCC COMPLETERS	TOTAL GAP OR SURPLUS	SERVICE REGION GAP	MEDIAN HOURLY WAGE
52.0201	Business Administration and Management, General	297	95	2	203	15	\$43.59
47.0105	Industrial Electronics Technology/Technician	138	31	21	107	(2)	\$21.41
43.0107	Criminal Justice/Police Science	108	47	25	61	(17)	\$21.94
12.0503	Culinary Arts/Chef Training	62	15	11	48	(8)	\$9.92
52.0401	Administrative Assistant and Secretarial Science, General	215	198	20	16	(3)	\$17.34
49.0102	Airline/Commercial/Professional Pilot and Flight Crew	6	1	1	5	(1)	\$39.84
52.0204	Office Management and Supervision	30	27	1	3	2	\$25.07
51.0903	Electroneurodiagnostic/Electroencephalographic Technology/Technologist	0	1	1	(1)	(1)	\$20.86
51.1501	Substance Abuse/Addiction Counseling	5	13	13	(7)	(12)	\$19.22
51.0602	Dental Hygiene/Hygienist	17	25	25	(8)	(24)	\$24.25
51.0904	Emergency Medical Technology/Technician (EMT Paramedic)	15	30	7	(15)	(7)	\$12.64
51.0908	Respiratory Care Therapy/Therapist	13	29	29	(16)	(28)	\$22.16
48.0507	Tool and Die Technology/Technician	1	21	7	(20)	(5)	\$23.07
51.0707	Health Information/Medical Records Technology/Technician	2	24	24	(22)	(24)	\$14.36
52.0101	Business/Commerce, General	3	26	10	(23)	(9)	\$46.13
15	Engineering Technology, General	20	43	21	(23)	(18)	\$24.62
51.0601	Dental Assisting/Assistant	10	35	19	(25)	(13)	\$15.78
51.0803	Occupational Therapist Assistant	5	30	30	(25)	(30)	\$25.65
51.0911	Radiologic Technology/Science - Radiographer	29	62	34	(33)	(32)	\$23.13
51.091	Diagnostic Medical Sonography/Sonographer and Ultrasound Technician	10	44	20	(34)	(20)	\$26.31
51.1004	Clinical/Medical Laboratory Technician	21	61	23	(40)	(22)	\$17.17
51.0806	Physical Therapy Technician/Assistant	30	78	35	(48)	(32)	\$22.37
50.0401	Design and Visual Communications, General	10	65	7	(55)	(6)	\$19.86
15.0613	Manufacturing Engineering Technology/Technician	9	72	2	(63)	1	\$39.22
19.0708	Child Care and Support Services Management	5	76	12	(72)	(11)	\$12.42
51.0801	Medical/Clinical Assistant	15	89	24	(74)	(19)	\$13.34
11.0101	Computer and Information Sciences, General	29	117	16	(88)	(14)	\$41.21
22.0302	Legal Assistant/Paralegal	25	114	16	(89)	(15)	\$24.76
51.3801	Registered Nursing/Registered Nurse	275	876	162	(601)	(151)	\$26.90

Source: EMSI Gap Analysis Model. Numbers may not sum due to rounding.



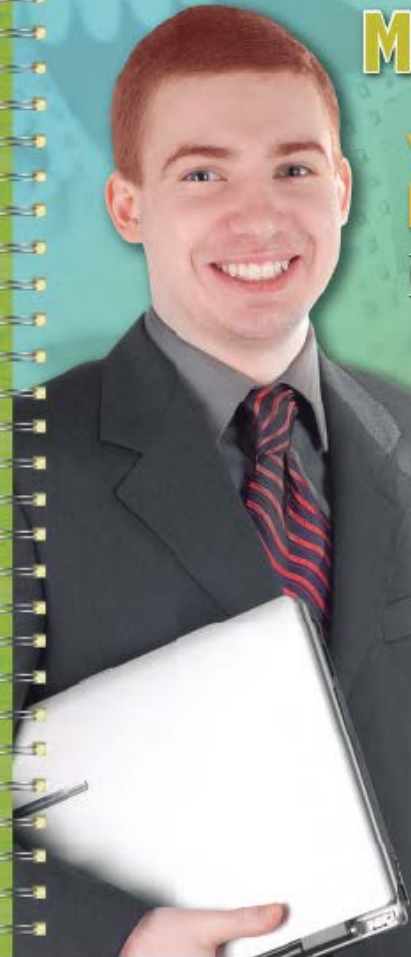
## ALABAMA SUCCESS EDUCATION & CAREER PLANNER



### Make It to the Top

Your guide to careers in  
**MANUFACTURING**

Great Career Ideas • Creating Your Plan • College Resources



### MAKE A PLAN

Sit down with your parents and counselor and create a plan.

Map out an Alabama Education Plan (sample at right) based on your interests, strengths, and possible career goals. Your plan outlines the courses and electives you'll take in high school, plus related clubs and career preparation. Your counselor will work with you to determine the learning experiences needed for you to complete your plan, such as using distance learning or earning college credit from your local community college. Here's a sample Alabama Education Plan for you to use as a guide.

#### ARTICULATION AGREEMENT

is a fancy term for a simple education agreement that can streamline your road to a successful career. Statewide articulation agreements link all high schools and two-year colleges in Alabama. They provide credit at two-year colleges for coursework mastered at the high school level.

### SAMPLE\* Alabama Education Plan

Name: Jordan Smith  
School: Central High School  
Diploma Option: Advanced Career and Technical Endorsement  
Cluster: Manufacturing  
Pathway: Maintenance, Installation and Repair  
Career Goal: General Machinist  
Postsecondary Goal: Associate in Applied Technology Degree

	Math	English	Science	Social Studies	Other Optional Courses	Sampling of Career and Technical Education Courses in Pathway
9th Grade	Algebra I	English 9	Physical Science	World History 1500-Present	Health Fine Arts Computer Applications Physical Education Foreign Language I**	<ul style="list-style-type: none"> <li>Introduction to Welding**</li> <li>Gas Metal Arc Welding</li> <li>Flux Cored Arc Welding</li> <li>Gas Tungsten Arc Welding I &amp; II</li> <li>Safety and Health Regulations</li> <li>Introduction to Precision Machining**</li> <li>Introduction to Lathe**</li> <li>Introduction to Milling, Drill Press, and Surface Grinder</li> </ul>
10th Grade	Geometry	English 10	Biology	United States History to 1677	Foreign Language II**	<ul style="list-style-type: none"> <li>Intermediate Computer Numerical Control</li> <li>Introduction to Manufacturing</li> <li>Computer-Aided Design and Computer-Aided Manufacturing I &amp; II**</li> <li>Introduction to Robotics</li> <li>Robotics Applications</li> </ul>
11th Grade	Algebra II with Trigonometry	English 11	Chemistry	United States History to Present	CTE Course I—Foundations of Engineering or CTE Course II	<ul style="list-style-type: none"> <li>Intermediate Lathe and Benchwork</li> <li>Intermediate Mill and Surface Grinder</li> <li>Introduction to Manufacturing</li> </ul>
12th Grade	Pre-Calculus or Calculus	English 12	Physics	Government and Economics	Required and CTE Courses	<ul style="list-style-type: none"> <li>Applied Welding II with Carbon Arc Cutting</li> <li>Applied Welding III</li> <li>Grinding Wheels and Inspection</li> <li>Applied Welding IV</li> <li>Advanced Grinding Wheels and Testing</li> <li>Gas Metal Arc Welding</li> <li>Flux Cored Arc Welding</li> </ul>
Community College	General Education Requirements					<ul style="list-style-type: none"> <li>Gas Metal Arc Welding I &amp; II</li> <li>Safety and Health Regulations</li> <li>Introduction to Precision Machining**</li> <li>Introduction to Lathe**</li> <li>Introduction to Milling, Drill Press, and Surface Grinder</li> <li>Introduction to Manufacturing</li> </ul>
Higher Education	General Education Requirements					<ul style="list-style-type: none"> <li>Gas Metal Arc Welding</li> <li>Flux Cored Arc Welding</li> </ul>

Education and Career Aspirations:  
9th Grade: Interest inventory and education plan initiated for all learners  
11th Grade: College placement assessment  
Career Learning Experiences:  
Career prep activities—paid and unpaid, internship, job shadowing

Co-Curricular Experiences: Technology Student Association (TSA)  
Extra-curricular Experiences: Science Olympiad  
Service Learning Experiences:  
Service as event staff at "Cure for Cure" career research career fundraiser

\*This is a sample plan and should not be considered a required plan for any student in or out of this career cluster.  
\*\*Alabama First Choice diploma requires 2 years of the same foreign language. \*\*Statewide articulated courses

Articulation agreements can take you down your career pathway as well. In many cases, students transferring from two-year to four-year colleges and universities can complete four-year general studies core course requirements before they transfer.



#### Get Career Credentials

If you're a student in a career and technical education (CTE) program, you may have the option of earning a Career Readiness Certificate along with your high school diploma. The nationally recognized certificate shows you're proficient in applied math, reading for information, and locating information—skills employers highly value. Ask your school counselor about the statewide program; if it's not in your high school now, it will be implemented soon.





# CAREER IDEAS

Need-to-know facts and figures about real Alabama jobs, salaries, and education options available in the Manufacturing cluster.

The 12 careers highlighted on the next page are a sampling of occupations in the **Manufacturing** cluster in Alabama. The charts include occupation name, description, plus wages for workers just starting out in the profession, average wages for those in the occupation, and the wages earned by experienced workers in the job (see "How to Read Job Charts"). The bar below the occupation's name contains the Standard Occupational Code (SOC); use the SOC to look up more information about the career in online databases such as O\*NET (see below). The bars are also color-coded to indicate the minimum level of education required for each profession.

For further information on occupations in all career clusters, go to the O\*NET database at [www.online.onetcenter.org](http://www.online.onetcenter.org).



## How to Read Job Charts

Starting Hourly Wage  
Average Hourly Wage  
Experienced Hourly Wage  
Occupation Name  
SOC Number  
Minimum Education Level (indicated by color bar)  
Occupation Description

**EDUCATION LEVELS**

- On-the-Job Training
- Work Experience in a Related Occupation
- Postsecondary Vocational Training
- Associate's Degree
- Bachelor's Degree
- Master's Degree
- Doctoral Degree

Source: Alabama Department of Industrial Relations, Labor Market Information Division.

## Check Out These Three COOL CAREERS

### Underwater Robotic Welder

**WHAT:** Program or operate high-tech, automated welding tools sent underwater to repair bridges, pipelines, tunnels, or platforms, and vessels.

**WHO:** Underwater robotic welders work in diving suits or on deck as welding engineers or technicians. Open water welders have special training, strength and coordination, and an adventurous spirit.



### Robotics Operator

**WHAT:** Use computer-based design and manufacturing programs to ensure that an operating facility runs like a well-oiled machine. Whether in packaging or welding, robotics is vital to manufacturing; therefore, so are robotics operators.

**WHO:** Robotics operators are detail-oriented and have excellent design skills. There are plenty of high-tech manufacturing jobs available in Alabama.



### Multicraft Automotive Technician

**WHAT:** Work as a highly skilled technician at one of the more than 200 auto production plants in Alabama.

**WHO:** Multicraft automotive technicians are skilled in electronics, hydraulics, programmable logic controllers, welding, machine tool technology, and robotics, as well as problem solving and team building.



### Occupational Health and Safety Specialist and Technician

SOC: 29-9011

Observe and analyze work environments and design programs to prevent disease or injury.



### Purchasing Agent Except Retail (Wholesale and Farm Products)

SOC: 13-1023

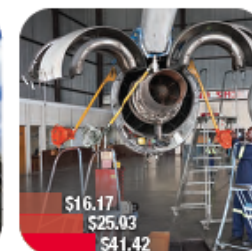
Purchase machinery, equipment, tools, parts, supplies, services, and materials for manufacturing.



### Chemical Plant and System Operator

SOC: 51-8001

Control a chemical process or system of machines throughout the manufacturing process.



### First-Line Supervisor/Manager of Mechanics, Installers, and Repairers

SOC: 40-1011

Monitor work performance, inventories, and shop conditions. Schedule around the skills of personnel.



### Power Plant Operator

SOC: 51-8013

Control the flow of machine-generated electricity from the plant to the community and other industrial plants.



### First-Line Supervisor/Manager of Production and Operations Workers

SOC: 51-1011

Supervise inspectors, precision workers, machinists, assemblers, plant and system operators, and other workers.



### Industrial Engineering Technician

SOC: 17-3026

Solve problems of industrial layout or manufacturing production.



### Telecommunications Equipment Installer and Repairer

SOC: 40-2022

Work on switching and dialing equipment and service all communication equipment.



### Radio Mechanic

SOC: 40-2021

Repair and maintain transmitting and receiving equipment.



### Mechanical Engineering Technician

SOC: 17-3027

Modify, develop, and test machinery and equipment directed by engineering staff or physical scientists.



### Commercial and Industrial Designer

SOC: 27-1021

Develop designs for manufactured products based on market research.



### Electrical and Electronics Repairer

SOC: 40-2004

Install and repair electronic equipment. Monitor and adjust industrial controls for manufacturing facilities.



## POSTSECONDARY PROGRAMS

# Take It to the Next Level

## Check "OUT"

Most Alabama schools offer this student organization related to the **Manufacturing** career cluster.



**SkillsUSA** • [www.skillsusa.org](http://www.skillsusa.org)

SkillsUSA is a partnership of students, teachers, and industry working to ensure America has a skilled workforce.

Programs include student competitions and employer-driven training in all career and technical education areas.

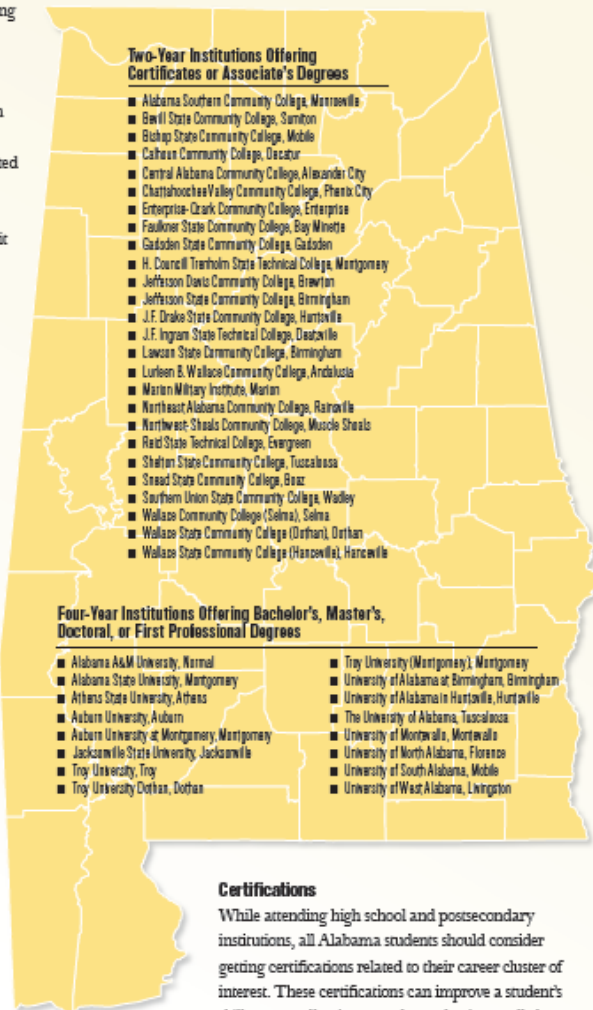


**CARCAM** Consortium for Alabama Regional Center for Automotive Manufacturing • [www.carcam.org](http://www.carcam.org)

The CARCAM consortium is comprised of faculty and administrators from five two-year colleges in Alabama. The goals of the consortium are to recruit, retain, and prepare students for careers in automotive manufacturing, as well as provide professional development for instructors of automotive manufacturing technology programs at secondary and postsecondary levels in Alabama.

In Alabama, the learning doesn't stop with high school graduation.

Here is a list of public postsecondary (after high school) institutions that may offer programs related to this cluster. For Web links to these two- and four-year institutions, visit [www.ache.alabama.gov/Collages&Universities/Directory.htm](http://www.ache.alabama.gov/Collages&Universities/Directory.htm).



### Two-Year Institutions Offering Certificates or Associate's Degrees

- Alabama Southern Community College, Morrisville
- Basil State Community College, Sumiton
- Bishop State Community College, Mobile
- Cahoon Community College, Decatur
- Central Alabama Community College, Alexander City
- Chattahoochee Valley Community College, Phenix City
- Enterprise-Ozark Community College, Enterprise
- Faulkner State Community College, Bay Minette
- Gadsden State Community College, Gadsden
- H. Councill Trenholm State Technical College, Montgomery
- Jefferson Davis Community College, Brewton
- Jefferson State Community College, Birmingham
- J.F. Drake State Community College, Huntsville
- J.F. Ingram State Technical College, Dothanville
- Lawson State Community College, Birmingham
- Lurleen B. Wallace Community College, Andalusia
- Marion Military Institute, Marion
- Northeast Alabama Community College, Rainville
- Northwest Shoals Community College, Muscle Shoals
- Reid State Technical College, Evergreen
- Shelton State Community College, Tuscaloosa
- Sneed State Community College, Boaz
- Southern Union State Community College, Wadley
- Wallace Community College (Selma), Selma
- Wallace State Community College (Dothan), Dothan
- Wallace State Community College (Hanceville), Hanceville

### Four-Year Institutions Offering Bachelor's, Master's, Doctoral, or First Professional Degrees

- Alabama A&M University, Normal
- Alabama State University, Montgomery
- Athens State University, Athens
- Auburn University, Auburn
- Auburn University at Montgomery, Montgomery
- Jacksonville State University, Jacksonville
- Troy University, Troy
- Troy University Dothan, Dothan
- Troy University (Montgomery), Montgomery
- University of Alabama at Birmingham, Birmingham
- University of Alabama in Huntsville, Huntsville
- The University of Alabama, Tuscaloosa
- University of Montevallo, Montevallo
- University of North Alabama, Florence
- University of South Alabama, Mobile
- University of West Alabama, Livingston

### Certifications

While attending high school and postsecondary institutions, all Alabama students should consider getting certifications related to their career cluster of interest. These certifications can improve a student's skill set, as well as increase the student's overall chance of gaining employment in the field.





# ALABAMA SUCCESS

## EDUCATION & CAREER PLANNER

Sponsored by  
Alabama Tech Prep

# Save Lives for a Living

Your guide to careers in  
**HEALTH SCIENCE**

Great Career Ideas • Creating Your Plan • College Resources



## MAKE A PLAN

Sit down with your  
parents and counselor  
and create a plan.

Map out an Alabama Education Plan  
(sample at right) based on your interests,  
strengths, and possible career goals.

Your plan outlines the courses and  
electives you'll take in high school, plus  
related clubs and career preparation. Your  
counselor will work with you to determine  
the learning experiences needed for you  
to complete your plan, such as using  
distance learning or earning college credit  
from your local community college.

Here's a sample Alabama Education  
Plan for you to use as a guide.

SAMPLE* Alabama Education Plan						Sampling of Career and Technical Education Courses in Pathway	
	Math	English	Science	Social Studies	Other Optional Courses	Technical Education Courses in Pathway	
9th Grade	Algebra I	English 9	Physical Science	World History 1500-Present	Health-V2 Fine Arts-V2 Computer Applications Physical Education-1 Foreign Language I**	Foundations of Health Science Emergency Services Health Protection and Wellness Introduction to Pharmacy Health Science Internship Dental Assisting Therapeutic Services Human Body Structures and Functions Safety and Health**	
10th Grade	Geometry	English 10	Biology	United States History to 1677	Foreign Language I**	Health Informatics Support Services Regulations Sports Medicine Dental Assisting**	
11th Grade	Algebra II with Trigonometry	English 11	Chemistry	United States History to Present		Advanced Health Seminar Disruptive Services Introduction to Biotechnology Advanced Health Seminar	
12th Grade	Pre-Calculus or Calculus	English 12	Physics	Government and Economics		Adult Health Sociology Anatomy Material and Child Nursing Adult Child Nursing Physician Assistant	
Common Core College	General Education Requirements Biology Chemistry Physics Mathematics English Psychology Statistics			Required and CTE Courses Anatomy Physiology Child Safety and Health I** Fundamentals of Nursing Introduction to Pharmacology Health Assessment		Role Transition Intro to Human Nutrition Computer Science Medical Ethics Professional Nursing Practice	
Higher Education							

### ARTICULATION AGREEMENT

is a fancy term for a simple  
education agreement that  
can streamline your road to  
a successful career.

Statewide articulation agreements link all high schools and  
two-year colleges in Alabama. They provide credit at two-year  
colleges for coursework mastered at the high school level.

Education and Career Agreements:  
9th Grade: Interest inventory and education plan initiated for all learners  
11th Grade: College placement assessment  
Career Learning Experiences:  
Career preparation—paid and unpaid, internships, job shadowing  
Co-Curricular Experiences: Health Occupations Students of America (HOSA)  
Extra-curricular Experiences: National Youth Leadership Forum on Medicine,  
Special Olympics  
Service Learning Experiences: Service project in which students  
demonstrate first-aid techniques to clients of children's charities

\*This is a sample plan and should not be considered a default plan for any student interested in this career cluster.  
\*\*Alabama First Choice diploma requires 2 years of the same foreign language. \*\*\*Statewide articulated courses

Articulation agreements can take you down your career pathway  
as well. In many cases, students transferring from two-year to  
four-year colleges and universities can complete four-year general  
studies core course requirements before they transfer.



### Get Career Credentials

If you're a student in a career and  
technical education (CTE) program,  
you may have the option of earning a Career  
Readiness Certificate along with your high school  
diploma. The nationally recognized certificate  
shows you're proficient in applied math, reading  
for information, and locating information—skills  
employers highly value. Ask your school  
counselor about the statewide program;  
if it's not in your high school now,  
it will be implemented soon.





# CAREER IDEAS

Need-to-know facts and figures about real Alabama jobs, salaries, and education options available in the Health Science cluster.

The 12 careers highlighted on the next page are a sampling of occupations in the Health Science cluster in Alabama. The charts include occupation name, description, plus wages for workers just starting out in the profession, average wages for those in the occupation, and the wages earned by experienced workers in the job (see "How to Read Job Charts"). The bar below the occupation's name contains the Standard Occupational Code (SOC); use the SOC to look up more information about the career in online databases such as O\*NET (see below). The bars are also color-coded to indicate the minimum level of education required for each profession.

For further information on occupations in all career clusters, go to the O\*NET database at [www.online.onetcenter.org](http://www.online.onetcenter.org).



## How to Read Job Charts

Starting Hourly Wage  
Average Hourly Wage  
Experienced Hourly Wage  
Occupation Name  
SOC Number  
Minimum Education Level (indicated by color bar)  
Occupation Description

**EDUCATION LEVELS**  
On-the-Job Training  
Work Experience in a Related Occupation  
Postsecondary Vocational Training  
Associate's Degree  
Bachelor's Degree  
Master's Degree  
Doctoral Degree

Source: Alabama Department of Industrial Relations, Labor Market Information Division.

## Check Out These Three COOL CAREERS

### Respiratory Therapist

**WHAT:** Under the direction of a doctor, respiratory therapists treat patients with breathing and cardiopulmonary disorders, including both long-term and emergency care. In addition to treatment, they also test and evaluate patients to chart each patient's progress.

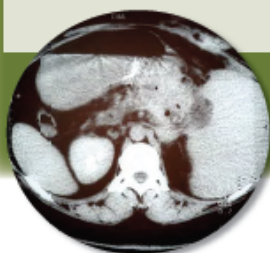
**WHO:** Respiratory therapists treat a variety of patients, from infants to the elderly. Therefore, anyone interested in this job must be comfortable working with any age group.



### Diagnostic Medical Sonographer

**WHAT:** Produce ultrasonic recordings of internal organs for use by physicians. Decide which images to offer physicians, looking for differences between healthy and problem areas.

**WHO:** Diagnostic medical sonographers have strong investigative, decision-making, and communication skills. They work directly with patients and physicians, and operate and maintain high-tech equipment.



### Health-care Interpreter

**WHAT:** Help patients with limited English language and reading skills understand spoken and written health information, and talk to their physicians, nurses, lab technicians, and other health-care providers.

**WHO:** Health-care interpreters are fluent in both English and a second language, are trained, qualified interpreters, and are familiar with medical terminology. They also may provide cultural information to health-care providers, which can help in a patient's care.



**Nursing Aide, Orderly, and Attendant**

SOC: 31-1012

Provide basic patient care under direction of nursing staff.



**Dental Hygienist**

SOC: 29-2021

Clean teeth and examine mouth for signs of disease.



**Internist (General)**

SOC: 29-1063

Diagnose and provide nonsurgical treatment of diseases and injuries of internal organ systems.



**Registered Nurse**

SOC: 29-1111

Address health needs of healthy and of ill or injured people.



**Physician and Surgeon**

SOC: 29-1069

Treat diseases, injuries, and deformities by methods such as manual manipulation, or instruments and appliances.



**Dental Laboratory Technician**

SOC: 51-9081

Construct and repair full or partial dentures or dental appliances.



**Medical and Clinical Laboratory Technologist**

SOC: 29-2011

Perform complex medical laboratory tests to diagnose, treat, and prevent disease.



**Licensed Practical and Licensed Vocational Nurse**

SOC: 29-2061

Care for ill, injured, convalescent, or disabled people in a variety of institutional settings.



**Nuclear Medicine Technologist**

SOC: 29-2033

Operate cameras that map radioactive drugs in a patient's body to create diagnostic images.



**Pharmacy Technician**

SOC: 29-2052

Prepare medications under the direction of a pharmacist.



**Dentist (General)**

SOC: 29-1021

Diagnose and treat diseases, injuries, and malformations of teeth and gums.



**Home Health Aide**

SOC: 31-1011

Provide routine personal health care to elderly, convalescent, or disabled persons in their home or in a residential care facility.



## POSTSECONDARY PROGRAMS

### Take It to the Next Level

## Check It OUT

Most Alabama schools offer this student organization related to the **Health Science** career cluster:

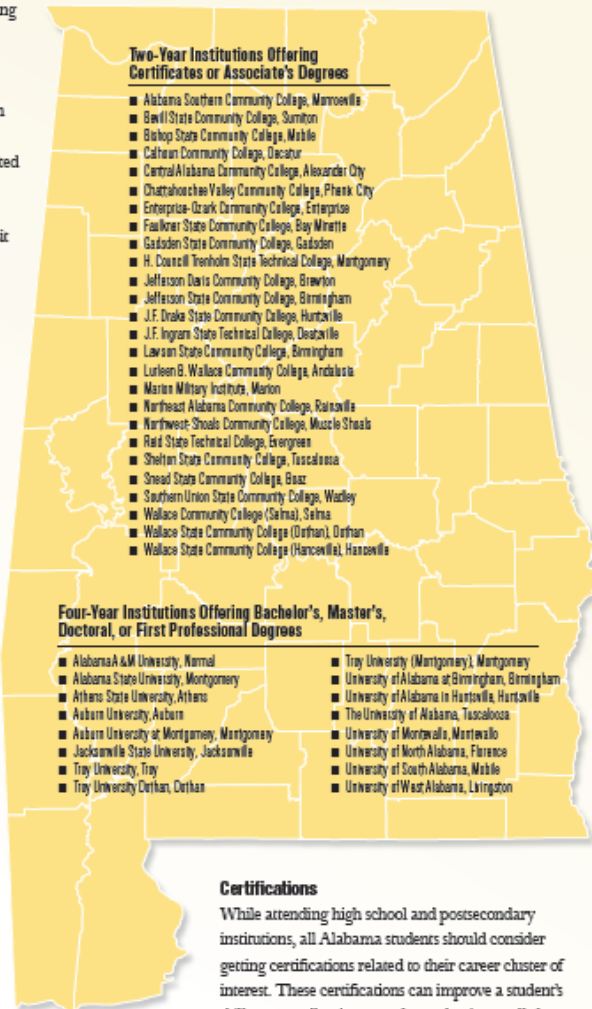


Health Occupation Students of America (HOSA) • [www.hosa.org](http://www.hosa.org)  
HOSA's mission is to enhance the delivery of compassionate, quality health care by providing opportunities for knowledge, skill, and leadership development among all Health Science technology students.



In Alabama, the learning doesn't stop with high school graduation.

Here is a list of public postsecondary (after high school) institutions that may offer programs related to this cluster. For Web links to these two- and four-year institutions, visit [www.ache.alabama.gov/Colleges&Universities/Directory.htm](http://www.ache.alabama.gov/Colleges&Universities/Directory.htm).



#### Two-Year Institutions Offering Certificates or Associate's Degrees

- Alabama Southern Community College, Marietta
- Bell State Community College, Sumiton
- Bishop State Community College, Mobile
- Calhoun Community College, Decatur
- Central Alabama Community College, Alexander City
- Chattahoochee Valley Community College, Phenix City
- Enterprise-Opark Community College, Enterprise
- Faulkner State Community College, Bay Minette
- Gadsden State Community College, Gadsden
- H. Councill Trenholm State Technical College, Montgomery
- Jefferson Davis Community College, Brewton
- Jefferson State Community College, Birmingham
- J.F. Drake State Community College, Huntsville
- J.F. Ingram State Technical College, Dothan
- Lawson State Community College, Birmingham
- Lurleen B. Wallace Community College, Andalusia
- Marion Military Institute, Marion
- Northeast Alabama Community College, Rainsville
- Northwest Shoals Community College, Muzzle Shoals
- Reid State Technical College, Evergreen
- Shelton State Community College, Tuscaloosa
- Snead State Community College, Boaz
- Southern Union State Community College, Wadley
- Wallace Community College (Selma), Selma
- Wallace State Community College (Dothan), Dothan
- Wallace State Community College (Hanceville), Hanceville

#### Four-Year Institutions Offering Bachelor's, Master's, Doctoral, or First Professional Degrees

- Alabama A&M University, Normal
- Alabama State University, Montgomery
- Athens State University, Athens
- Auburn University, Auburn
- Auburn University at Montgomery, Montgomery
- Jacksonville State University, Jacksonville
- Troy University, Troy
- Troy University Dothan, Dothan
- Troy University (Montgomery), Montgomery
- University of Alabama at Birmingham, Birmingham
- University of Alabama in Huntsville, Huntsville
- The University of Alabama, Tuscaloosa
- University of Montevallo, Montevallo
- University of North Alabama, Florence
- University of South Alabama, Mobile
- University of West Alabama, Livingston

#### Certifications

While attending high school and postsecondary institutions, all Alabama students should consider getting certifications related to their career cluster of interest. These certifications can improve a student's skill set, as well as increase the student's overall chance of gaining employment in the field.





# Fast Track Academy



Summer following 10 <sup>th</sup> Grade		11 <sup>th</sup> Grade Fall Semester		11 <sup>th</sup> Grade Spring Semester		11 <sup>th</sup> Grade Summer Semester		12 <sup>th</sup> Grade Fall Semester		12 <sup>th</sup> Grade Fall Semester	
HIS 201	US History I	ART 100	Art Appreciation	BUS 241	Principles of Acct I	BUS 242	Principles of Acct II	BIO 103	Principles of Biology I	BIO 104	Principles of Biology II
PHL 206	Ethics and Society	BUS 263	Legal & Social	CIS 146	Microcomputer Applications	ECO 231	Principles of Macro	BUS 271	Business Statistics I	BUS 272	Business Statistics II
		ENG 101	English Composition I	ENG 102	English Composition II			ENG 261	English Literature I	ECO 232	Principles of Micro
		HIS 202	US History II	THR 120	Theater Appreciation			MTH 112	Pre-calculus Algebra	MTH 120	Calculus Applications
								ORI 100	Freshman Seminar		
6 Credit Hours		12 Credit Hours		12 Credit Hours		6 Credit Hours		14 Credit Hours		13 Credit Hours	

# Fast Track for Industry



Summer following 10 <sup>th</sup> Grade		11 <sup>th</sup> Grade Fall Semester		11 <sup>th</sup> Grade Spring Semester		11 <sup>th</sup> Grade Summer Semester		12 <sup>th</sup> Grade Fall Semester		12 <sup>th</sup> Grade Fall Semester	
CIS 146	Microcomputer Applications	HIS 101	Western Civ I	HIS 102	Western Civ II	BIO 103	Principles of Biology I	ENG 101	English Composition I	ENG 102	English Composition II
PHL 206	Ethics and Society	ORI 110	Freshman Seminar	WDT 110	Industrial Blueprint Reading	MTH 116	Math Applications	WDT 108	SMAW Fillet/OFC	WDT 120	Shield Metal Arc Groove Welding
		WDT 119	Gas Metal Arc	WDT 228	Gas Tungsten Arc Welding			WDT 109	SMAW Fillet/PAC/CAC	WDT 125	SMAW Groove Welding Lab
		WDT 124	Gas Metal Arc Lab	WDT 268	Gas Tungsten Arc Welding			WDT 122	SMAW Fillet/OFC Lab	WDT 180	Special Topics SMAW Groove
		WDT 158	Consumable Arc Lab	WDT 280	Special Topics GTAW Groove Lab			WDT 123	SMAW Fillet/PAC/CAC Lab	WDT 181	Special Topics SMAW Groove Lab
		WDT 219	Welding Inspection and Testing								
6 Credit Hours		16 Credit Hours		15 Credit Hours		7 Credit Hours		15 Credit Hours		15 Credit Hours	

# REHAU Academy



12 <sup>th</sup> Grade Fall Semester		12 <sup>th</sup> Grade Spring Semester		Summer Immediately Following Graduation		Fall		Spring	
English	High School	Chemistry	High School	ILT 194	Intro to Programmable Logic Controllers	MTT 273	Injection Mold Processing	MTT 173	Injection Mold Setter Skills
AUT 102	Lean Manufacturing and Industrial Safety	Government/Economics	High School			MTT 275	Injection Mold Processing Lab	MTT 175	Injection Mold Setter Skills Lab
ENT 126	Basic Computer-Aided Drafting	Physics	High School						
		ENT 129	Section and Auxiliary Views						
		ILT 169	Hydraulics Pneumatics						
6 Credit Hours + High School + Paid Apprenticeship		6 Credit Hours + High School + Paid Apprenticeship		3 Credit Hours + Paid Apprenticeship		6 Credit Hours + Paid Apprenticeship		6 Credit Hours + Paid Apprenticeship	





Readiness<sup>3</sup>



Readiness<sup>3</sup>: Ready for College, Ready for Work, Ready for Life is the theme for Wallace State's guiding Strategic Plan through 2017. Preparing students for the workforce and achieving excellent student outcomes are at the heart of the plan.

"Our office promises companies that Wallace State will prepare them a competent workforce, and the college has never failed to deliver on that promise."  
-- Dale Greer, Cullman Economic Development Agency

Some of the most outstanding programmatic successes of the year:

#### 100% EMPLOYMENT

KNOWN GRADUATES FOR ACADEMIC YEAR 2013-2014: Business Management and Supervision, Therapeutic Massage, Physical Therapist Assistant, Human Services, Health Information Technology, Respiratory Therapy, Pharmacy Technology, Occupational Therapy Assistant, Child Development, Medical Assistant, Emergency Medical Services, Diagnostic Imaging, Dental Assisting, Nursing, HVAC, Culinary Arts, Diesel Technology, Engineering Technology, Flight Technology, Machine Tool Technology, Welding, Agriculture/Horticulture, and Electronics Technology reported 100% employed or pursuing a higher degree

#### 100% PASS RATE

BOARD OR OTHER CERTIFICATION EXAMS: Physical Therapy Assistant, Diagnostic Imaging, Diagnostic Medical Sonography, Respiratory Therapy. Other top performers: Clinical Lab Technician (90.9%), Dental Hygiene (96%), Nursing (92.9%) and Occupational Therapy Assistant (96.8%)

(See the Scorecard of Performance Measures at the end of this report for more results.)

## New Opportunities for Early College Enrollment

### STUDENTS STARTING EARLY, AND STARTING RIGHT

For more than a decade, Wallace State has provided high school students the opportunity to simultaneously earn high school and college credit through its dual enrollment and Fast Track programs.

In 2015, over 550 dual enrollment students were enrolled at Wallace State, including 72 in the Fast Track programs at WSCC and J.B. Pennington High School and 84 in Wallace State's new Fast Track for Industry program.

Like the traditional Fast Track program, Fast Track for Industry is located on Wallace State's campus. Cullman County Schools instructors maintain classrooms in WSCC's General Studies building to serve students from 7 a.m. to 7 p.m. each day.

The program allows students to Start Early, jump-starting their future by compressing their time spent in high school and college by taking rigorous college courses that allow students to receive both high school and college credit. Students will earn college credits towards an industry-recognized credential and may qualify for free tuition through Career/Tech Dual Enrollment tax credit-funded scholarships available for qualified career technical programs. They also have opportunities to participate in workforce experiences such as job-shadowing and apprenticeships.

"This is a shining example of a perfect partnership designed with the end in mind; that is, transitioning motivated young adults through postsecondary education and training and into the workforce more quickly. Everyone wins," said Dr. Vicki Karolewics,

Wallace State President. "Business and industry have ready access to a middle skills workforce. Parents save money on higher education tuition. Students complete their postsecondary education earlier and, as they enter the workforce sooner, the state gains taxpayers who contribute to a sound economic base. At Wallace State, our strategic plan is Readiness<sup>3</sup>, assuring that our students are Ready for College, Ready for Work and Ready for Life by helping students Start Early, Start Right, Finish, and Succeed."

The success rate for dual enrollment, and especially the Fast Track program, is exceptionally high. For the last nine classes, 96 percent or more of our Fast Track students have graduated from high school, and most go on directly to employment or transfer to a university. Some even earned enough college credit to simultaneously graduate from high school and from Wallace State with an associate degree, and transferred to the college or university of their choice as a junior.

Moreover, these students disproportionately win scholarships to further their education. Among the highest awards were a \$50,000 scholarship to Millsaps College awarded to Caitlin Kuykendall, a \$33,000 scholarship to UAB awarded to Valerie Barnes for Engineering, a \$21,000 scholarship to Jacksonville State awarded to Aspyr Seely, and a \$19,000 scholarship to Birmingham Southern awarded to Victoria Moss.

## New Opportunities for Early College Enrollment continued

### FAST TRACK FOR INDUSTRY AND REHAU ACADEMY

Wallace State's partnerships with local industry have created new pathways for students to earn their high school and/or college degrees while working in local industry for hands-on training, supplementing what they learn in the classroom, and maintaining their employment after successful completion of the program.

In 2015, Wallace State introduced Fast Track for Industry and the REHAU Academy, expanding Dual Enrollment partnerships with Cullman County Schools and its apprenticeship program at REHAU.

"It has worked extremely well for us. The Wallace State students are exposed to all different areas of the plant and have a chance to work with all different types of equipment," Michael Stewart, REHAU maintenance manager, said of the apprenticeship program.

The Wallace State students in the apprenticeship program spend two days a week in classes at Wallace State, while also fulfilling at least 30 hours of work at REHAU. REHAU pays for the classes, books and supplies for the students accepted into the apprenticeship program.

In the new REHAU Academy program, eight paid apprentices will be selected each year from the Fast Track for Industry program. Students will apply for apprenticeships during their junior year of high school and begin the apprenticeship during their senior year. Each apprenticeship lasts two years – the senior year of high school and freshman year of community

college – during which time students will split their time between working at REHAU and attending Fast Track for Industry classes on campus at Wallace State. While at REHAU, students will receive real-world specialized training in injection molding to become polymer specialists. REHAU will compensate students financially for their participation in the apprenticeship.

Upon successful completion of the program, students will have graduated from high school and earned certification as a Polymer Technician from Wallace State. They will be eligible for full-time employment with REHAU as polymer specialists.





# Fast Track Academy

Academic Year	Completed Fast Track	Earned a Degree or Certificate	Attending Wallace after Completing Fast Track	Transferred to University
2007-2008	98%	17%	83%	37%
2008-2009	100%	23%	73%	33%
2009-2010	97%	30%	70%	27%
2010-2011	98%	NA	56%	31%
2011-2012	89%	NA	50%	29%
2012-2013	98%	13%	53%	47%
2013-2014	98%	56%	38%	52%
2014-2015	97%	44%	58%	NA
2015-2016	96%	38%	77%	NA
2016-2017	87%	31%	28%	72%
Cumulative	95%	22%	56%	34%





# Fast Track for Industry (2016-17)

Students Enrolled	Completed Fast Track for Industry	Earned a Degree or Certificate	Attending Wallace after Completing Fast Track	Transferred to University	Entering Workforce	Other Training
57	45	30	18	9	16	2
	79%	67%	40%	20%	36%	4%