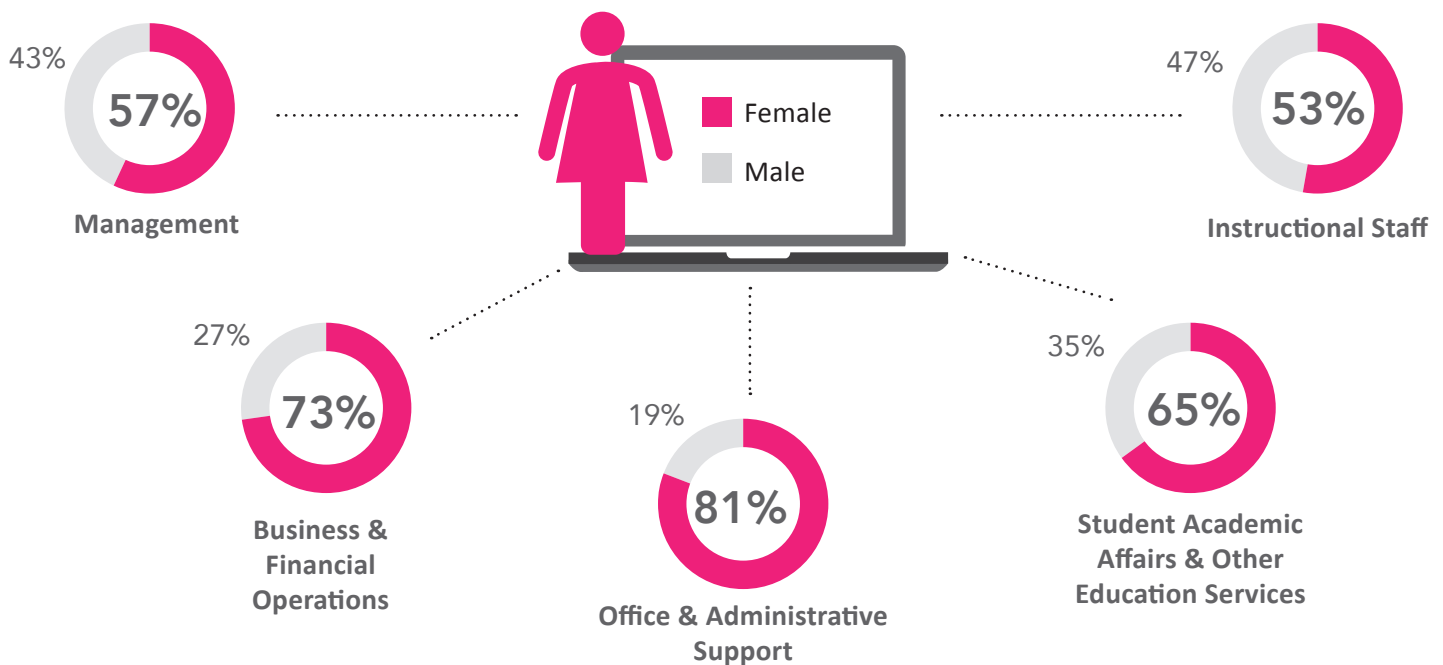


Female campus administrators

Women are well represented among campus administrative positions.

Community college campus administrative staff, 2013



Source: AACC analysis of Integrated Postsecondary Education Data System (IPEDS) 2013 Fall Staff Data File, U.S. Department of Education, National Center for Education Statistics.



Women comprise the bulk of campus administrative positions. Comparing data within each race-ethnicity shows similar or higher patterns. More African-American females than African-American males work in the positions listed above, representing 76 percent in business and financial operations, 64 percent of management and 69 percent of student and academic and other education services. Among Native Americans, females had similar representation, accounting for 83 percent of office and administrative support, 75 percent of business and financial operations, and 60 percent of management. The same among Hispanics, where females account for 77 percent of jobs in office and administrative support, and 71 percent of positions in business and financial operations. Ditto for Asian-Americans: females comprise 73 percent of positions in office and administrative support and 72 percent in business and financial operations.

For more information, contact Kent Phillippe, associate vice president for research and student success at the American Association of Community Colleges, at (202) 416-4505 or kphillippe@aacc.nche.edu, or Rahel Tekle, AACC research associate, at (202) 416-4508 or rtekle@aacc.nche.edu.