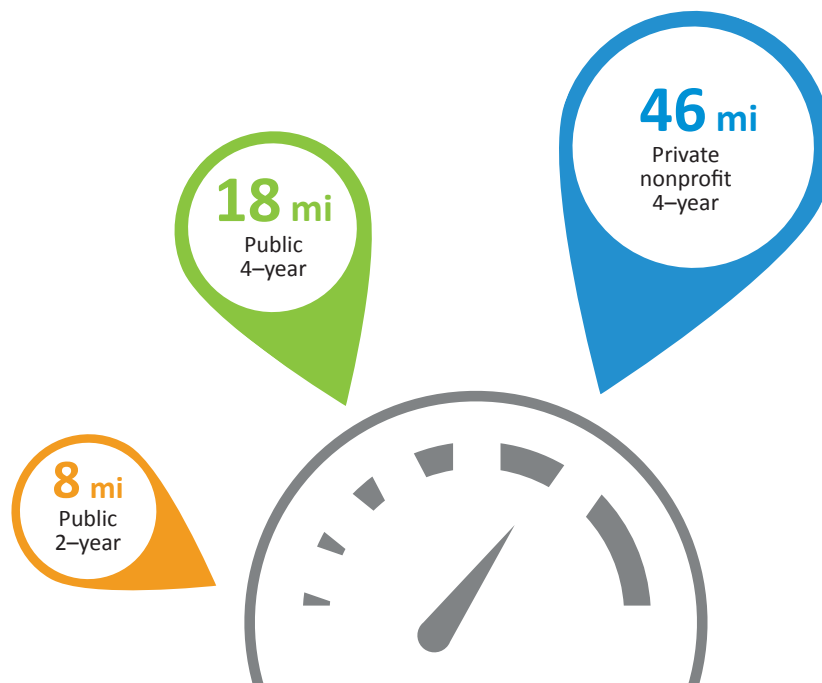


## Staying close to home

*Most public two-year college students attend local colleges.*

### Median distance from students' home to colleges in miles



**Source:** American Council on Education, "Education Deserts: The Continued Significance of 'Place' in the Twenty-First Century," Viewpoints Voices from the Field, February 2016.

AACC analysis of 2011-12 National Postsecondary Student Aid Study (NPSAS: 12) data, U.S. Department of Education, National Center for Education Statistics.



Most community college students live within eight miles of the college they attend, far closer than students who attend public and private four-year colleges and universities. When selecting a college, factors such as proximity, transportation, affordability and flexibility play a key role for low-income students, particularly for students of color. Local community colleges are often the best options for these students. Also, more than 60 percent of community college students juggle jobs and school, which is another factor for them in selecting a local two-year college. For more information, [click here](#).

For more information, contact Kent Phillippe, associate vice president for research and student success at the American Association of Community Colleges, at (202) 416-4505 or [kphillippe@aacc.nche.edu](mailto:kphillippe@aacc.nche.edu), or Rahel Tekle, AACC research associate, at (202) 416-4508 or [rtekle@aacc.nche.edu](mailto:rtekle@aacc.nche.edu).